

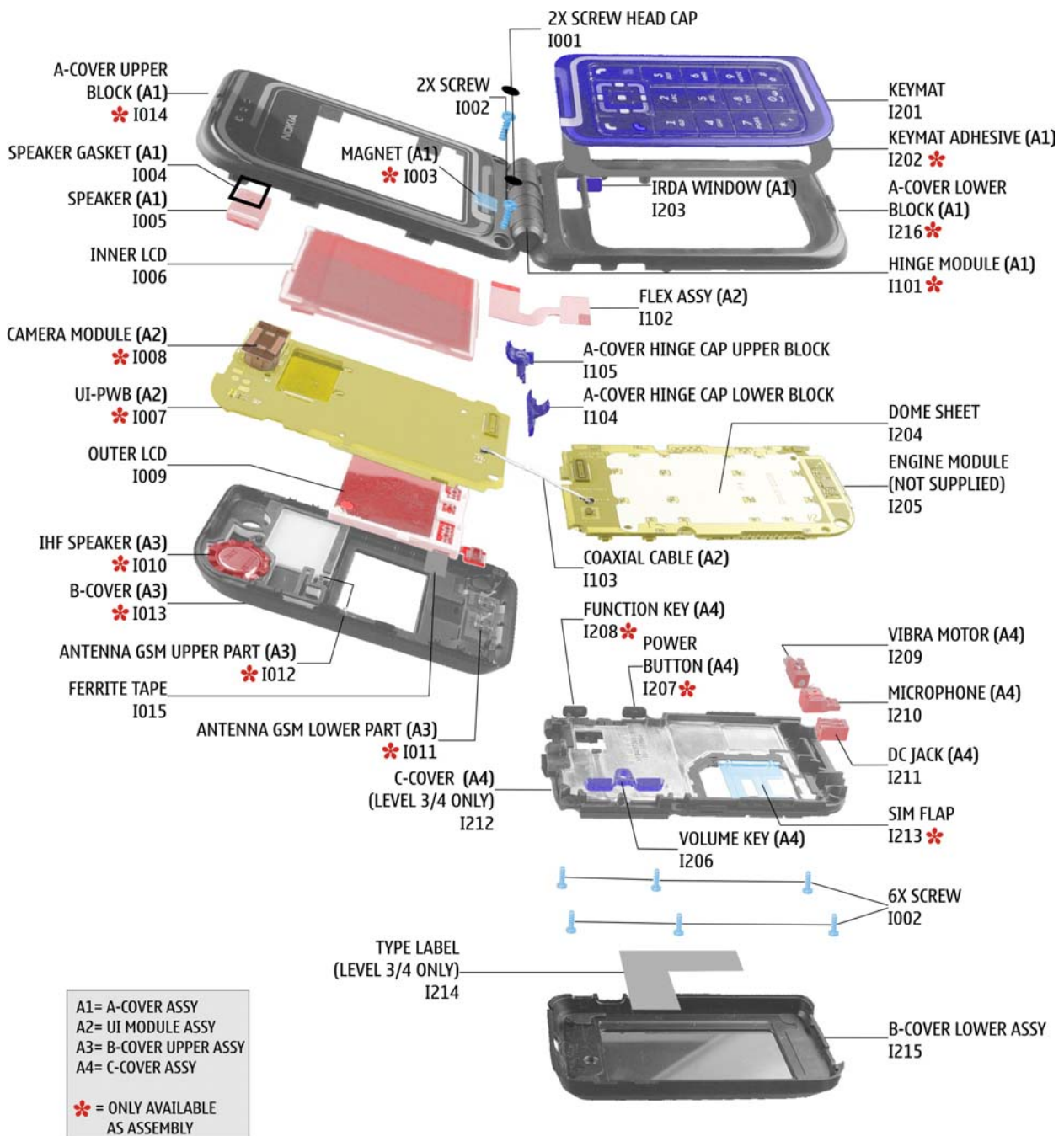
**Nokia Customer Care**  
**RM-8/RM-47/RM-48 Series Transceivers**

**2 - Parts Lists and  
Component Layout**

**Table of Contents**

	<b>Page No</b>
<b>Exploded View of RM-8/RM-47/RM-48 .....</b>	<b>3</b>
Mechanical Parts of RM-8.....	4
Mechanical Parts of RM-47 .....	5
Mechanical Parts of RM-48.....	6
Variant Parts .....	7
Swap Units .....	8
<b>RM-8 parts list .....</b>	<b>9</b>
<b>RM-47 parts list .....</b>	<b>32</b>
<b>RM-48 parts list .....</b>	<b>53</b>
<b>Upper block for RM-8/RM-47 (1DS).....</b>	<b>85</b>
<b>Upper block for RM-48 (1NM).....</b>	<b>88</b>
<b>RM-8 assembly values diagram, bottom.....</b>	<b>92</b>
<b>RM-8 assembly values diagram, top .....</b>	<b>93</b>
<b>RM-47 assembly values diagram, bottom.....</b>	<b>94</b>
<b>RM-47 assembly values diagram, top .....</b>	<b>95</b>
<b>RM-48 assembly values diagram, bottom.....</b>	<b>96</b>
<b>RM-48 assembly values diagram, top .....</b>	<b>97</b>
<b>RM-8/RM-47 upper block assembly values diagram, bottom.....</b>	<b>98</b>
<b>RM-8/RM-47 upper block assembly values diagram, top .....</b>	<b>99</b>
<b>RM-48 upper block assembly values diagram, bottom .....</b>	<b>100</b>
<b>RM-48 upper block assembly value diagram, top.....</b>	<b>101</b>

## Exploded View of RM-8/RM-47/RM-48



For the individual parts, refer to the next page.

■ **Mechanical Parts of RM-8**

ITEM/ CIRCUIT REF.	QTY	PART NO	PART NAME
I001	2	9400338	SCREW HEAD CAP
I002	8	6380231	SCREW T6
	1	<b>0266061</b>	<b>A-COVER ASSY</b>
I003	1	-	MAGNET
I004	1	9481263	SPEAKER GASKET
I005	1	5140285	SPEAKER
I014	1	1	A-COVER UPPER BLOCK
I101	1	-	HINGE MODULE
I202	1	-	KEYMAT ADHESIVE
I203	1	9453773	IRDA WINDOW
I216	1	-	A-COVER LOWER BLOCK
I201	1	XXXXXXX	KEYMAT
I006	1	4850825	INNER LCD 132X162
	1	???????	<b>UI MODULE ASSY</b>
I007	1	-	UI PWB
I008	1	-	CAMERA MODULE
I102	1	9481270	FLEX ASSY
I103	1	5429043	COAXIAL CABLE
I009	1	4850873	OUTER LCD 67X98
	1	<b>9459711</b>	<b>B-COVER UPPER ASSY</b>
I010	1	-	IHF SPEAKER
I011	1	-	ANTENNA GSM LOWER PART
I012	1	-	ANTENNA GSM UPPER PART
I013	1	-	B-COVER
I015	1	9400832	FERRIT TAPE
I104	1	9453764	A-COVER HINGE CAP LOWER BLOCK
I105	1	9453765	A-COVER HINGE CAP UPPER BLOCK
I204	1	9795159	DOMESHEET
I205	1	-	ENGINE MODULE
	1	<b>0266060</b>	<b>C-COVER ASSY</b>
I206	1	9797086	VOLUME KEY
I207	1	-	POWER BUTTON
I208	1	-	FUNCTION KEY
I209	1	6800057	VIBRA MOTOR
I210	1	5140265	MICROPHONE
I211	1	5400243	DC JACK
I212	1	-	C-COVER
I213	1	-	SIM FLAP
I214	1	XXXXXXX	TYPE LABEL
I215	1	0266055	B-COVER LOWER ASSY

### ■ Mechanical Parts of RM-47

ITEM/ CIRCUIT REF.	QTY	PART NO	PART NAME
I001	2	9400480	SCREW HEAD CAP
I002	8	6380231	SCREW T6
	<b>1</b>	<b>0266389</b>	<b>A-COVER ASSY</b>
I003	1	-	MAGNET
I004	1	9481263	SPEAKER GASKET
I005	1	5140285	SPEAKER
I014	1	-	A-COVER UPPER BLOCK
I101	1	-	HINGE MODULE
I202	1	-	KEYMAT ADHESIVE
I203	1	9467243	IRDA WINDOW
I216	1	-	A-COVER LOWER BLOCK
I201	1	XXXXXXX	KEYMAT
I006	1	4850825	INNER LCD 132X162
	<b>1</b>	<b>0263475</b>	<b>UI MODULE ASSY</b>
I007	1	-	UI PWB
I008	1	-	CAMERA MODULE
I102	1	9481270	FLEX ASSY
I103	1	5429043	COAXIAL CABLE
I009	1	4850873	OUTER LCD 67X98
	<b>1</b>	<b>0266390</b>	<b>B-COVER UPPER ASSY</b>
I010	1	-	IHF SPEAKER
I011	1	-	ANTENNA GSM LOWER PART
I012	1	-	ANTENNA GSM UPPER PART
I013	1	-	B-COVER
I015	1	9400832	FERRIT TAPE
I104	1	9900200	A-COVER HINGE CAP LOWER BLOCK
I105	1	9454411	A-COVER HINGE CAP UPPER BLOCK
I204	1	9795159	DOMESHEET
I205	1	-	ENGINE MODULE
	<b>1</b>	<b>0266060</b>	<b>C-COVER ASSY</b>
I206	1	9797086	VOLUME KEY
I207	1	-	POWER BUTTON
I208	1	-	FUNCTION KEY
I209	1	6800057	VIBRA MOTOR
I210	1	5140265	MICROPHONE
I211	1	5400243	DC JACK
I212	1	-	C-COVER
I213	1	-	SIM FLAP
I214	1	9370967	TYPE LABEL
I215	1	0266391	B-COVER LOWER ASSY

■ **Mechanical Parts of RM-48**

ITEM/ CIRCUIT REF.	QTY	PART NO	PART NAME
I001	2	9400480	SCREW HEAD CAP
I002	8	6380231	SCREW T6
	<b>1</b>	<b>0266389</b>	<b>A-COVER ASSY</b>
I003	1	-	MAGNET
I004	1	9481263	SPEAKER GASKET
I005	1	5140285	SPEAKER
I014	1	-	A-COVER UPPER BLOCK
I101	1	-	HINGE MODULE
I202	1	-	KEYMAT ADHESIVE
I203	1	9467243	IRDA WINDOW
I216	1	-	A-COVER LOWER BLOCK
I201	1	XXXXXXX	KEYMAT
I006	1	4850825	INNER LCD 132X162
	<b>1</b>	<b>0263475</b>	<b>UI MODULE ASSY</b>
I007	1	-	UI PWB
I008	1	-	CAMERA MODULE
I102	1	9481270	FLEX ASSY
I103	1	5429043	COAXIAL CABLE
I009	1	4850873	OUTER LCD 67X98
	<b>1</b>	<b>0266390</b>	<b>B-COVER UPPER ASSY</b>
I010	1	-	IHF SPEAKER
I011	1	-	ANTENNA GSM LOWER PART
I012	1	-	ANTENNA GSM UPPER PART
I013	1	-	B-COVER
I015	1	9400832	FERRITE TAPE
I104	1	9900200	A-COVER HINGE CAP LOWER BLOCK
I105	1	9454411	A-COVER HINGE CAP UPPER BLOCK
I204	1	9795159	DOMESHEET
I205	1	-	ENGINE MODULE
	<b>1</b>	<b>0266060</b>	<b>C-COVER ASSY</b>
I206	1	9797086	VOLUME KEY
I207	1	-	POWER BUTTON
I208	1	-	FUNCTION KEY
I209	1	6800057	VIBRA MOTOR
I210	1	5140265	MICROPHONE
I211	1	5400243	DC JACK
I212	1	-	C-COVER
I213	1	-	SIM FLAP
I214	1	9370967	TYPE LABEL
I215	1	0266391	B-COVER LOWER ASSY

## ■ Variant Parts

Table 1: RM-8 variant parts

<b>KEYMATS EMEA</b>	
9797541	KEYMAT ASSY LATIN 040-008221 TAMPO
9797255	KEYMAT ASSY ARABIC 040-003658
9797257	KEYMAT ASSY CYRILLIC 040-003662
9797258	KEYMAT ASSY GREEK 040-003664
9797259	KEYMAT ASSY HEBREW 040-003666
9797264	KEYMAT ASSY FARSI 040-004232
9797265	KEYMAT ASSY URDU 040-004234
<b>KEYMATS APAC</b>	
9797254	KEYMAT ASSY LATIN DMC07991
9797256	KEYMAT ASSY BOPO 040-003660
9797260	KEYMAT ASSY STROKE 040-003668
9797261	KEYMAT ASSY THAI 040-003670

Table 2: RM-47 variant parts

<b>KEYMATS EMEA &amp; APAC</b>	
9797266	KEYMAT LATIN
<b>KEYMATS EMEA</b>	
9797275	KEYMAT CYRILLIC/LATIN
9797276	KEYMAT ARABIC/LATIN
9797277	KEYMAT GREEK/LATIN
9797278	KEYMAT HEBREW/LATIN
9797279	KEYMAT URDU/LATIN
9797280	KEYMAT FARSI/LATIN
<b>KEYMATS APAC</b>	
9797281	KEYMAT BOPOMOFO/LATIN
9797282	KEYMAT STROKE/LATIN
9797283	KEYMAT THAI/LATIN

**■ Swap Units****Table 3: RM-8**

<b>0086302</b>	<b>N7270 RM-8 SWAP ENGINE E&amp;A</b>
<b>0086301</b>	<b>N7270 RM-8 SWAP ENGINE RUSSIA</b>
<b>0086300</b>	<b>N7270 RM-8 SWAP ENGINE TURKEY</b>
<b>0086299</b>	<b>N7270 RM-8 SWAP ENGINE UKRAINE</b>
<b>0086297</b>	<b>N7270 RM-8 SWAP ENGINE SOUTH AFRICA</b>
<b>0086387</b>	<b>N7270 RM-8 SWAP ENGINE ARABIC</b>
<b>0086388</b>	<b>N7270 RM-8 SWAP ENGINE GREECE</b>

**Table 4: RM-47**

<b>0086293</b>	<b>N6170 RM-47 SWAP UNIT E&amp;A</b>
<b>0086292</b>	<b>N6170 RM-47 SWAP UNIT RUSSIA</b>
<b>0086291</b>	<b>N6170 RM-47 SWAP UNIT TURKEY</b>
<b>0086294</b>	<b>N6170 RM-47 SWAP UNIT UKRAINE</b>
<b>0086296</b>	<b>N6170 RM-47 SWAP UNIT SOUTH AFRICA</b>
<b>0086295</b>	<b>N6170 RM-47 SWAP ENGINE ARABIC</b>
<b>0086389</b>	<b>N6170 RM-47 SWAP ENGINE GREECE</b>



## RM-8 parts list

Item	Side	X	Y	Type	Name	Value	
A7001	Bottom	B	3	SHIELD_DMC07388	RF PA SHIELD ASSEMBLY DMC07388	~	~
A7002	Bottom	F	3	SHIELD_DMC07389	RF HELGO SHIELD ASSEMBLY DMC07389	~	~
A7003	Bottom	J	5	SHIELD_DMC07778	BB1 SHIELD ASSY DMC07778	~	~
A7004	Bottom	E	7	SHIELD_DMC07779	BB2 SHIELD ASSY DMC07779	~	~
B2200	Bottom	I	2	CRYSTAL_FC_255	CRYSTAL 32.768KHZ+-20PPM 12.5PF	32.768k Hz	~
C2000	Bottom	H	1	0805C_H1.0	CHIPCAP X5R 10U M 6V3 T=1.0 0805	10u	6V3
C2001	Bottom	H	1	0805C_H1.0	CHIPCAP X5R 10U M 6V3 T=1.0 0805	10u	6V3
C2002	Bottom	H	1	0805C_H1.0	CHIPCAP X5R 10U M 6V3 T=1.0 0805	10u	6V3
C2003	Bottom	C	6	0402C	Chipcap 5% NP0	27p	50V
C2004	Bottom	J	5	0402C	Chipcap X7R 10% 50V 0402	1n0	50V
C2005	Bottom	M	2	0603C	Cer. cap 10% 50V 0603	10n	50V
C2006	Bottom	M	3	0402C	Chipcap 5% NP0	27p	50V
C2007	Bottom	M	5	0405_GN M23	CHIP ARRAY X5R 2X1U K 6V3 MA 0405	2x1u	6.3V
C2008	Bottom	K	6	0402C	Chipcap X7R 10% 16V 0402	10n	16V
C2010	Top	O	7	0402C	Chipcap 5% NP0	10p	50V
C2011	Top	O	7	0402C	Chipcap 5% NP0	10p	50V

Item	Side	X	Y	Type	Name	Value	
C20 12	Top	O	7	0402C	Chipcap 5% NP0	10p	50V
C20 13	Top	O	7	0402C	Chipcap 5% NP0	10p	50V
C20 14	Bot- tom	M	4	0402C	CHIPCAP X5R 100N K 10V 0402	100n	10V
C20 17	Bot- tom	G	7	0805C	CHIPCAP X5R 10U M 6V3 0805	10U	6V3
C20 18	Bot- tom	G	6	0805C	CHIPCAP X5R 10U M 6V3 0805	10U	6V3
C20 19	Bot- tom	G	6	0805C	CHIPCAP X5R 10U M 6V3 0805	10U	6V3
C20 20	Bot- tom	B	5	POSCAP_ TPB_B2	CHIPTCAP 100U M 6.3V 3.5X2.8X2.1	100u_6V 3	6V3
C20 21	Bot- tom	C	5	CAP_EEL _0J476R	CHIPTCAP 47U M 6V3 3.5X2.8X1.2	47u_6V3	6V3
C20 22	Bot- tom	M	4	0402C	CHIPCAP NP0 270P J 25V 0402	270p	25V
C20 80	Bot- tom	C	5	0603C	CHIPCAP X5R 1U K 6V3 0603	1u0	6.3V
C21 00	Bot- tom	K	3	0405_2_P 0.65_AVX	CHIP ARRAY X5R 2X33N M 10V 0405	2x33n	10V
C21 01	Bot- tom	K	3	0405_2_P 0.65_AVX	CHIP ARRAY X5R 2X1N M 16V 0405	2x1n	16V
C21 03	Bot- tom	K	1	0405_2_P 0.65_AVX	CHIP ARRAY X5R 2X33N M 10V 0405	2x33n	10V
C21 04	Bot- tom	M	3	0405_2_P 0.65_AVX	CHIP ARRAY X5R 2X10N K 16V 0405	2x10n	16V
C21 05	Bot- tom	M	5	0405_2_P 0.65_AVX	CHIP ARRAY X5R 2X10N K 16V 0405	2x10n	16V
C21 06	Bot- tom	M	3	0405_2_P 0.65_AVX	CHIP ARRAY X5R 2X10N K 16V 0405	2x10n	16V
C21 07	Bot- tom	M	3	0402C	CHIPCAP X5R 100N K 10V 0402	100n	10V
C21 08	Bot- tom	L	3	0603C	CHIPCAP X5R 1U K 6V3 0603	1u0	6.3V

Item	Side	X	Y	Type	Name	Value	
C2109	Bottom	L	3	0402C	Chipcap 5% NP0	68p	50V
C2110	Bottom	K	1	0402C	Chipcap X7R 10% 50V 0402	1n0	50V
C2111	Bottom	K	1	0603C	CHIPCAP X5R 1U K 6V3 0603	1u0	6.3V
C2112	Bottom	K	1	0402C	CHIPCAP X5R 100N K 10V 0402	100n	10V
C2114	Bottom	H	5	0405_2_P 0.65_AVX	CHIP ARRAY X5R 2X33N M 10V 0405	2x33n	10V
C2116	Bottom	G	5	0603C	CHIPCAP X5R 1U K 6V3 0603	1u0	6.3V
C2117	Bottom	G	5	0402C	CHIPCAP X5R 100N K 10V 0402	100n	10V
C2118	Bottom	H	5	0402C	Chipcap 5% NP0	100p	50V
C2119	Bottom	H	5	0402C	Chipcap 5% NP0	100p	50V
C2120	Bottom	H	5	0402C	Chipcap 5% NP0	27p	50V
C2121	Bottom	H	5	0402C	Chipcap 5% NP0	27p	50V
C2200	Bottom	I	1	0402C	Chipcap X7R 10% 16V 0402	10n	16V
C2201	Bottom	J	5	0402C	Chipcap X7R 10% 16V 0402	10n	16V
C2202	Bottom	I	1	0402C	Chipcap 5% NP0	10p	50V
C2203	Bottom	J	2	0402C	Chipcap 5% NP0	10p	50V
C2204	Bottom	J	1	0402C	CHIPCAP X5R 100N K 10V 0402	100n	10V
C2205	Bottom	I	4	0402C	CHIPCAP X5R 100N K 10V 0402	100n	10V
C2206	Bottom	I	4	0402C	CHIPCAP X5R 100N K 10V 0402	100n	10V

Item	Side	X	Y	Type	Name	Value	
C22-07	Bottom	I	4	0402C	CHIPCAP X5R 100N K 10V 0402	100n	10V
C22-08	Bottom	H	2	0402C	CHIPCAP X5R 100N K 10V 0402	100n	10V
C22-09	Bottom	H	2	0402C	CHIPCAP X5R 100N K 10V 0402	100n	10V
C22-10	Bottom	H	3	0603C	CHIPCAP X5R 1U K 16V 0603	1u0	16V
C22-11	Bottom	H	2	0603C	CHIPCAP X5R 1U K 6V3 0603	1u0	6.3V
C22-12	Bottom	H	2	0603C	CHIPCAP X5R 1U K 6V3 0603	1u0	6.3V
C22-15	Bottom	J	1	0405_GN M23	CHIP ARRAY X5R 2X1U K 6V3 MA 0405	2x1u	6.3V
C22-16	Bottom	I	1	0405_GN M23	CHIP ARRAY X5R 2X1U K 6V3 MA 0405	2x1u	6.3V
C22-17	Bottom	I	2	0405_GN M23	CHIP ARRAY X5R 2X1U K 6V3 MA 0405	2x1u	6.3V
C22-18	Bottom	I	1	0405_GN M23	CHIP ARRAY X5R 2X1U K 6V3 MA 0405	2x1u	6.3V
C22-19	Bottom	K	4	0405_GN M23	CHIP ARRAY X5R 2X1U K 6V3 MA 0405	2x1u	6.3V
C22-20	Bottom	J	1	0405_GN M23	CHIP ARRAY X5R 2X1U K 6V3 MA 0405	2x1u	6.3V
C22-21	Bottom	J	4	0405_GN M23	CHIP ARRAY X5R 2X1U K 6V3 MA 0405	2x1u	6.3V
C22-22	Bottom	H	3	0405_GN M23	CHIP ARRAY X5R 2X1U K 6V3 MA 0405	2x1u	6.3V
C22-23	Bottom	H	4	0405_GN M23	CHIP ARRAY X5R 2X1U K 6V3 MA 0405	2x1u	6.3V
C22-24	Bottom	H	4	0405_GN M23	CHIP ARRAY X5R 2X1U K 6V3 MA 0405	2x1u	6.3V
C22-25	Bottom	H	4	0405_GN M23	CHIP ARRAY X5R 2X1U K 6V3 MA 0405	2x1u	6.3V
C22-26	Bottom	I	2	0405_GN M23	CHIP ARRAY X5R 2X1U K 6V3 MA 0405	2x1u	6.3V

Item	Side	X	Y	Type	Name	Value	
C22 27	Bot- tom	H	3	0405_GN M23	CHIP ARRAY X5R 2X1U K 6V3 MA 0405	2x1u	6.3V
C22 28	Bot- tom	K	4	0405_GN M23	CHIP ARRAY X5R 2X1U K 6V3 MA 0405	2x1u	6.3V
C22 30	Bot- tom	H	3	0405_GN M23	CHIP ARRAY X5R 2X1U K 6V3 MA 0405	2x1u	6.3V
C23 50	Bot- tom	H	4	0405_GN M23	CHIP ARRAY X5R 2X1U K 6V3 MA 0405	2x1u	6.3V
C23 51	Bot- tom	K	5	0405_GN M23	CHIP ARRAY X5R 2X1U K 6V3 MA 0405	2x1u	6.3V
C23 52	Bot- tom	H	2	0405_GN M23	CHIP ARRAY X5R 2X1U K 6V3 MA 0405	2x1u	6.3V
C23 60	Bot- tom	I	4	0402C	Chipcap X7R 10% 16V 0402	10n	16V
C23 61	Bot- tom	J	4	0402C	Chipcap X7R 10% 16V 0402	10n	16V
C23 62	Bot- tom	J	1	0402C	Chipcap X7R 10% 50V 0402	1n0	50V
C23 70	Bot- tom	E	7	0805C	CHIPCAP X5R 10U M 6V3 0805	10U	6V3
C23 71	Bot- tom	G	8	0805C	CHIPCAP X5R 10U M 6V3 0805	10U	6V3
C23 72	Bot- tom	G	7	0805C	CHIPCAP X5R 10U M 6V3 0805	10U	6V3
C24 00	Bot- tom	I	5	0405_GN M23	CHIP ARRAY X5R 2X1U K 6V3 MA 0405	2x1u	6.3V
C24 01	Bot- tom	I	5	0405_GN M23	CHIP ARRAY X5R 2X1U K 6V3 MA 0405	2x1u	6.3V
C24 02	Bot- tom	E	6	0405_GN M23	CHIP ARRAY X5R 2X1U K 6V3 MA 0405	2x1u	6.3V
C24 03	Bot- tom	E	6	0405_GN M23	CHIP ARRAY X5R 2X1U K 6V3 MA 0405	2x1u	6.3V
C24 04	Top	B	2	0402C	Chipcap 5% NP0	12p	50V
C24 11	Bot- tom	D	8	0402C	Chipcap 5% NP0	47p	50V

Item	Side	X	Y	Type	Name	Value	
C24 12	Bot- tom	E	7	0603C	CHIPCAP X5R 1U K 6V3 0603	1u0	6.3V
C24 13	Bot- tom	D	8	0805C	CHIPCAP X5R 4U7 K 25V 0805	4u7	25V
C24 15	Bot- tom	E	9	0402C	Chipcap X7R 10% 16V 0402	10n	16V
C24 19	Bot- tom	J	5	0402C	Chipcap X7R 10% 16V 0402	10n	16V
C26 00	Bot- tom	B	8	0805C	CHIPCAP X5R 10U M 6V3 0805	10U	6V3
C26 01	Bot- tom	C	8	0402C	Chipcap 5% NP0	27p	50V
C26 02	Bot- tom	C	8	0402C	CHIPCAP X5R 100N K 10V 0402	100n	10V
C26 03	Bot- tom	E	8	0402C	CHIPCAP X5R 100N K 10V 0402	100n	10V
C27 00	Bot- tom	L	1	0402C	CHIPCAP X5R 100N K 10V 0402	100n	10V
C28 00	Bot- tom	K	8	0603C	CHIPCAP X5R 1U K 6V3 0603	1u0	6.3V
C28 02	Bot- tom	K	8	0402C	Chipcap X7R 10% 50V 0402	1n0	50V
C28 03	Bot- tom	G	7	0402C	Chipcap X7R 10% 50V 0402	1n0	50V
C28 04	Bot- tom	G	7	0402C	Chipcap X7R 10% 50V 0402	1n0	50V
C28 61	Bot- tom	G	8	0402C	Chipcap X7R 10% 16V 0402	10n	16V
C28 62	Bot- tom	H	8	0402C	Chipcap X7R 10% 16V 0402	10n	16V
C28 63	Bot- tom	G	8	0402C	Chipcap X7R 10% 16V 0402	10n	16V
C28 64	Bot- tom	K	5	0402C	Chipcap X7R 10% 16V 0402	10n	16V
C28 65	Bot- tom	H	7	0402C	Chipcap X7R 10% 16V 0402	10n	16V

Item	Side	X	Y	Type	Name	Value	
C2866	Bottom	H	7	0402C	Chipcap X7R 10% 16V 0402	10n	16V
C2867	Bottom	H	8	0402C	Chipcap X7R 10% 16V 0402	10n	16V
C2868	Bottom	G	8	0402C	Chipcap X7R 10% 16V 0402	10n	16V
C2869	Bottom	G	8	0402C	Chipcap X7R 10% 16V 0402	10n	16V
C2900	Bottom	H	4	0402C	Chipcap 5% NP0	100p	50V
C2901	Bottom	H	7	0402C	Chipcap 5% NP0	100p	50V
C3000	Bottom	L	6	0402C	CHIPCAP X5R 100N K 10V 0402	100n	10V
C3001	Bottom	L	6	0402C	Chipcap X7R 10% 16V 0402	10n	16V
C3002	Bottom	L	6	0402C	CHIPCAP X5R 100N K 10V 0402	100n	10V
C3003	Bottom	M	6	0402C	CHIPCAP X5R 100N K 10V 0402	100n	10V
C3004	Bottom	M	6	0402C	Chipcap X7R 10% 16V 0402	10n	16V
C3005	Bottom	L	6	0402C	CHIPCAP X5R 100N K 10V 0402	100n	10V
C3010	Bottom	M	8	0402C	Chipcap X7R 10% 16V 0402	10n	16V
C3011	Bottom	M	6	0603C	CHIPCAP X5R 1U K 6V3 0603	1u0	6.3V
C3012	Bottom	M	6	0402C	Chipcap X7R 10% 16V 0402	10n	16V
C3013	Bottom	M	6	0603C	CHIPCAP X5R 1U K 6V3 0603	1u0	6.3V
C3170	Bottom	K	8	0402C	Chipcap 5% NP0	27p	50V
C3303	Bottom	G	6	0402C	Chipcap 5% NP0	27p	50V

Item	Side	X	Y	Type	Name	Value	
C3304	Bottom	H	6	0402C	Chipcap X7R 10% 16V 0402	10n	16V
C6100	Top	O	6	0402C	CHIPCAP X5R 100N K 10V 0402	100n	10V
C6101	Top	O	6	0402C	Chipcap X7R 10% 16V 0402	10n	16V
C6102	Top	O	6	0402C	CHIPCAP X7R 33N K 10V 0402	33n	10V
C6103	Top	O	4	0402C	CHIPCAP X5R 100N K 10V 0402	100n	10V
C6105	Top	O	7	0402C	Chipcap 5% NP0	100p	50V
C6106	Top	O	4	0402C	CHIPCAP X7R 33N K 10V 0402	33n	10V
C6107	Top	O	5	0402C	Chipcap 5% NP0	27p	50V
C6108	Top	O	4	0402C	CHIPCAP X7R 33N K 10V 0402	33n	10V
C6109	Top	P	6	0402C	CHIPCAP X7R 33N K 10V 0402	33n	10V
C6111	Top	O	5	0402C	Chipcap 5% NP0	47p	50V
C6116	Top	P	4	0402C	CHIPCAP X5R 100N K 10V 0402	100n	10V
C6117	Top	P	5	0402C	CHIPCAP X5R 100N K 10V 0402	100n	10V
C6120	Top	O	6	0402C	Chipcap X7R 10% 50V 0402	1n0	50V
C6180	Top	O	4	0402C	CHIPCAP X5R 100N K 10V 0402	100n	10V
C6181	Top	O	4	0402C	CHIPCAP X5R 100N K 10V 0402	100n	10V
C6182	Bottom	J	3	0402C	CHIPCAP X5R 100N K 10V 0402	100n	10V
C6183	Bottom	J	4	0402C	CHIPCAP X5R 100N K 10V 0402	100n	10V



Item	Side	X	Y	Type	Name	Value	
C61 84	Top	O	4	0402C	CHIPCAP X5R 100N K 10V 0402	100n	10V
C61 85	Top	P	4	0402C	CHIPCAP X5R 100N K 10V 0402	100n	10V
C75 00	Bot- tom	F	2	0402C	CHIPCAP X5R 100N K 10V 0402	100n	10V
C75 02	Bot- tom	G	1	0402C	CHIPCAP NP0 180P J 25V 0402	180p	25V
C75 03	Bot- tom	G	2	0603C	CHIPCAP NP0 2N7 G 50V 0603	2n7	50V
C75 04	Bot- tom	F	2	0402C	CHIPCAP NP0 270P J 25V 0402	270p	25V
C75 06	Bot- tom	D	5	0402C	Chipcap 5% NP0	100p	50V
C75 08	Bot- tom	D	4	0603C	CHIPCAP NP0 2N2 J 16V 0603	2n2	16V
C75 09	Bot- tom	E	5	0603C	CHIPCAP NP0 1N0 J 50V 0603	1n0	50V
C75 10	Bot- tom	E	5	0402C	Chipcap 5% NP0	56p	50V
C75 12	Bot- tom	E	5	0402C	Chipcap X7R 10% 16V 0402	10n	16V
C75 13	Bot- tom	E	5	0402C	Chipcap 5% NP0	18p	50V
C75 16	Bot- tom	F	4	0402C	Chipcap 5% NP0	27p	50V
C75 18	Bot- tom	F	4	0402C	CHIPCAP X5R 100N K 10V 0402	100n	10V
C75 19	Bot- tom	F	3	0402C	Chipcap X7R 10% 16V 0402	10n	16V
C75 20	Bot- tom	F	4	0402C	Chipcap 5% NP0	10p	50V
C75 21	Bot- tom	F	3	0402C	CHIPCAP X5R 100N K 10V 0402	100n	10V
C75 22	Bot- tom	F	4	0402C	Chipcap X7R 10% 16V 0402	10n	16V

Item	Side	X	Y	Type	Name	Value	
C75 24	Bot- tom	F	4	0402C	CHIPCAP X5R 100N K 10V 0402	100n	10V
C75 25	Bot- tom	F	4	0402C	Chipcap 5% NP0	100p	50V
C75 26	Bot- tom	F	5	0402C	CHIPCAP X5R 100N K 10V 0402	100n	10V
C75 27	Bot- tom	F	5	0402C	CHIPCAP X5R 100N K 10V 0402	100n	10V
C75 28	Bot- tom	G	4	0402C	Chipcap 5% NP0	82p	50V
C75 29	Bot- tom	F	4	0402C	Chipcap 5% NP0	47p	50V
C75 30	Bot- tom	F	4	0402C	Chipcap 5% NP0	47p	50V
C75 31	Bot- tom	D	2	0402C	Chipcap 5% NP0	18p	50V
C75 32	Bot- tom	C	4	0402C	Chipcap 5% NP0	27p	50V
C75 35	Bot- tom	E	3	0402C	CHIPCAP NP0 470P J 6V3 0402	470p	6V3
C75 36	Bot- tom	F	3	0402C	CHIPCAP NP0 470P J 6V3 0402	470p	6V3
C75 37	Bot- tom	F	3	0402C	CHIPCAP NP0 470P J 6V3 0402	470p	6V3
C75 38	Bot- tom	F	3	0402C	CHIPCAP NP0 470P J 6V3 0402	470p	6V3
C75 39	Bot- tom	F	2	0402C	Chipcap 5% NP0	10p	50V
C77 02	Bot- tom	B	4	0402C	Chipcap X7R 10% 50V 0402	1n0	50V
C77 04	Bot- tom	B	3	0402C	Chipcap +-0.25pF NP0	1p0	50V
C77 05	Bot- tom	B	4	0805C	CHIPCAP X5R 4U7 K 6V3 0805	4u7	6V3
C77 06	Bot- tom	A	4	0402C	Chipcap 5% NP0	27p	50V

Item	Side	X	Y	Type	Name	Value	
C7707	Bottom	C	4	0402C	Chipcap 5% NP0	56p	50V
C7708	Bottom	C	4	0402C	Chipcap 5% NP0	12p	50V
C7711	Bottom	C	2	0402C	Chipcap X7R 10% 50V 0402	1n0	50V
C7712	Bottom	C	4	0402C	Chipcap X7R 10% 16V 0402	10n	16V
C7713	Bottom	C	2	0402C	Chipcap 5% NP0	15p	50V
C7714	Bottom	D	2	0402C	Chipcap 5% NP0	15p	50V
C7716	Bottom	C	2	0402C	Chipcap X7R 10% 16V 0402	10n	16V
C7720	Bottom	D	4	0402C	Chipcap X7R 10% 16V 0402	10n	16V
C7800	Bottom	B	2	0402C	Chipcap 5% NP0	100p	50V
C7801	Bottom	B	2	0402C	Chipcap +-0.25pF NP0	3p3	50V
C7802	Bottom	B	2	0402C	CHIPCAP X5R 100N K 10V 0402	100n	10V
C7803	Bottom	B	2	0402C	Chipcap 5% NP0	15p	50V
C7804	Bottom	C	2	0402C	Chipcap +-0.25pF NP0	1p2	50V
C7805	Bottom	D	3	0402C	Chipcap 5% NP0	15p	50V
C7806	Bottom	D	3	0402C	Chipcap 5% NP0	15p	50V
D2200	Bottom	I	3	TFBGA_244	UEMEK2V0 LF WDENA TFBGA244	~	~
D2400	Bottom	E	6	USMD14_2.433X2.11ABC_0.675	REG LM2795TLX-NOPB 2.4X2.0X0.8MM	~	~

Item	Side	X	Y	Type	Name	Value	
D2401	Bottom	I	5	USMD14_2.433X2.11ABC_0.675	REG LM2795TLX-NOPB 2.4X2.0X0.8MM	~	~
D2800	Bottom	I	7	uBGA_289	TIKUEDGE 1.1 F751728A C035 288UBGA	~	~
D3000	Bottom	K	7	FBGA44_H1.0	NOR 128M+128M 1.8/1.8V FBGA44 PBFREE	8Mx16	~
D3001	Bottom	M	7	WBGA_60_8.1X6.6	SDRAM 4X16 1.8V/1.8V FBGA60 PBFREE	4Mx16	~
F2000	Bottom	N	3	0402_FUSE_H0.5	SM FUSE FF 1.5A 32V 0402	1.5A	~
G7500	Bottom	F	2	VCO_DC_S02733	VCO 3296-3980MHZ 4-BAND MATSUSHITA	3296-3980MHz	~
G7501	Bottom	F	5	NGK3138C	VCTCXO 26MHZ +-3PPM 2.7v 1.3MA GSM	26MHz	~
L2000	Bottom	N	3	0805_BL_M21	FERR.BEAD 0R03 42R/100MHZ 3A 0805	42R/100MHz	~
L2001	Bottom	M	4	0603_BLM	FERRITE BEAD 0R5 600R/100MHZ 0603	600R/100MHz	~
L2002	Bottom	M	5	0603_BLM	FERRITE BEAD 0R5 600R/100MHZ 0603	600R/100MHz	~
L2003	Bottom	M	4	FERRITE_0402	FERRITE BEAD 0.6R 600R/100MHZ 0402	600R/100MHz	~
L2005	Top	O	7	0402L_XL	CHIP COIL 68N J Q17/300M 0402	68nH	~
L2100	Bottom	L	4	FERRITE_0402	FERRITE BEAD 0.6R 600R/100MHZ 0402	600R/100MHz	~
L2101	Bottom	M	3	0405_2_H1.0	CHIP BEAD ARRAY 2X1000R 0405	2x1000R/100MHz	~
L2102	Bottom	M	4	0405_2_H1.0	CHIP BEAD ARRAY 2X1000R 0405	2x1000R/100MHz	~
L2103	Bottom	M	5	0405_2_H1.0	CHIP BEAD ARRAY 2X1000R 0405	2x1000R/100MHz	~
L2104	Bottom	H	5	FERRITE_0402	FERRITE BEAD 0.6R 600R/100MHZ 0402	600R/100MHz	~

Item	Side	X	Y	Type	Name	Value	
L2105	Bottom	I	5	FERRITE_0402	FERRITE BEAD 0.6R 600R/100MHZ 0402	600R/100MHz	~
L2200	Bottom	J	4	FERRITE_BK1608	FERRITE BEAD 0R3 47/100MHZ 0603	47R/100MHz	~
L2350	Bottom	H	4	0603_BLM	FERRITE BEAD 0R5 600R/100MHZ 0603	600R/100MHz	~
L2351	Bottom	J	5	0603_BLM	FERRITE BEAD 0R5 600R/100MHZ 0603	600R/100MHz	~
L2352	Bottom	H	2	0603_BLM	FERRITE BEAD 0R5 600R/100MHZ 0603	600R/100MHz	~
L2353	Bottom	H	5	0603_BLM	FERRITE BEAD 0R5 600R/100MHZ 0603	600R/100MHz	~
L2354	Bottom	H	3	0603_BLM	FERRITE BEAD 0R5 600R/100MHZ 0603	600R/100MHz	~
L2355	Bottom	J	5	0603_BLM	FERRITE BEAD 0R5 600R/100MHZ 0603	600R/100MHz	~
L2370	Bottom	F	7	CHOKE_D412F	CHOKE 10U 0R33 0.77A 4.6X4.6X1.2	10uH	~
L2400	Bottom	D	6	CHOKE_D3312FB_H1.4	CHOKE 22U M0.33A 1R5 3.3X3.3X1.3	22uH	~
L2401	Bottom	J	5	0603_BLM	FERRITE BEAD 0R5 600R/100MHZ 0603	600R/100MHz	~
L3170	Bottom	L	8	FERRITE_0402	FERRITE BEAD 0.6R 600R/100MHZ 0402	600R/100MHz	~
L6100	Top	O	5	0402L	CHIP COIL 39N J Q24/800M 0402	39nH	~
L6101	Top	O	7	0402L_POL2	CHIP COIL 120NH J Q8/100MHZ 0402	120nH	~
L7500	Bottom	E	4	0402_ELJRF	CHIP COIL 5N6+-0N3 Q7/100M 0402	5n6H	~
L7501	Bottom	E	4	0402_ELJRF	CHIP COIL 5N6+-0N3 Q7/100M 0402	5n6H	~
L7502	Bottom	E	4	0402L	CHIP COIL 3N3 +-0N3 Q28/800M 0402	3n3H	~
L7503	Bottom	E	4	0402L	CHIP COIL 3N3 +-0N3 Q28/800M 0402	3n3H	~

Item	Side	X	Y	Type	Name	Value	
L7700	Bottom	B	4	0805_BL M21	FERR.BEAD 0R03 42R/100MHZ 3A 0805	42R/100MHz	~
L7800	Bottom	B	2	0402L	CHIP COIL 3N3 +-0N3 Q28/800M 0402	3n3H	~
L7801	Bottom	C	2	0402L	CHIP COIL 3N3 +-0N3 Q28/800M 0402	3n3H	~
L7802	Bottom	E	2	0402L	CHIP COIL 4N7 +-0N3 Q28/800M 0402	4n7H	~
L7803	Bottom	D	2	0402L	CHIP COIL 4N7 +-0N3 Q28/800M 0402	4n7H	~
L7804	Bottom	E	2	0402L	CHIP COIL 15N J Q30/800M 0402	15nH	~
L7805	Bottom	E	2	0402L	CHIP COIL 15N J Q30/800M 0402	15nH	~
L7807	Bottom	E	3	0402L	CHIP COIL 8N2 J Q28/800MHZ 0402	8n2H	~
N2000	Bottom	K	5	BCC_16	NUT/CP2137 ASIC HBCC16++	~	~
N2080	Bottom	D	5	USMD10_2.08X1.57_H0.675	CURRENT SENS LM3820 USMD10 PB-FREE	~	~
N2100	Bottom	H	5	USMD9_1.544X1.544_0.675	AF AMP 0.4W LM4890/NCP2890 PBFREE	~	~
N2370	Bottom	E	7	USMD_10_2.458X1.899	DC-DC CONV LM2708HTLX-1.57V/1.35V USMD10	~	~
N2400	Bottom	D	7	SOT23L_8	DC/DC CONV 350MA TK11851 SOP8	~	~
N2401	Top	B	2	SH248CSP	HALL IC SWITCH SH248CSP VCC	~	~
N2600	Bottom	D	8	IRDA_CIM_50M5_T	IRDA CIM-50M5A **RESERVED**	~	~
N6100	Top	O	5	WFBGA34_2_3.54X3.54	FM RECEIVER TEA5761UK V2C CSP	~	~

Item	Side	X	Y	Type	Name	Value	
N7500	Bottom	E	3	TFBGA88	HELGO86G LB	~	~
N7700	Bottom	C	3	RF_PA_P F79001B_ 6.2X5.2A	PW AMP RF9250E4.1 MICRO GSM/EDGE	~	~
R2000	Top	O	4	0402_NT H5	NTC RES 47K J B=4050+-3% 0402	47k	~
R2001	Bottom	M	4	0402R	Resistor 5% 63mW	100k	~
R2004	Bottom	M	5	0402R	Resistor 5% 63mW	220k	~
R2005	Bottom	L	5	0402R	Resistor 5% 63mW	220k	~
R2006	Bottom	M	5	0402_VA R	CHIP VARISTOR VWM14V VC50V 0402	14V/50V	~
R2009	Bottom	L	5	uBGA_10 _1.7X2.05	ASIP USB2 FILTER BGA10**PBFREE**	~	~
R2010	Bottom	M	5	0402R	Resistor 5% 63mW	33R	~
R2015	Bottom	C	6	0402_VA R	CHIP VARISTOR VWM14V VC50V 0402	14V/50V	~
R2081	Bottom	C	5	0402R	Resistor 5% 63mW	2k2	~
R2082	Bottom	C	5	0402R	Resistor 5% 63mW	2k2	~
R2100	Bottom	L	3	MNR02_S R	RES NETWORK 0W06 2X2K2 J 0404	2x2k2	~
R2101	Bottom	M	3	MNR02_S R	RES NETWORK 0W06 2X10R J 0404	2x10R	~
R2102	Bottom	M	4	MNR02_S R	RES NETWORK 0W06 2X10R J 0404	2x10R	~
R2104	Bottom	L	3	0402R	Resistor 5% 63mW	2k2	~
R2105	Bottom	K	1	0402R	Resistor 5% 63mW	100R	~
R2106	Bottom	K	1	0402R	Resistor 5% 63mW	10k	~

Item	Side	X	Y	Type	Name	Value	
R2107	Bottom	K	1	uBGA11_2.15X1.65	ASIP MIC W/ESD RES+CAP+ZDI BGA11	~	~
R2109	Bottom	M	4	0402_VA R	CHIP VARISTOR VWM14V VC50V 0402	14V/50V	~
R2110	Bottom	M	4	0402_VA R	CHIP VARISTOR VWM14V VC50V 0402	14V/50V	~
R2111	Bottom	M	5	0402_VA R	CHIP VARISTOR VWM14V VC50V 0402	14V/50V	~
R2112	Bottom	M	5	0402_VA R	CHIP VARISTOR VWM14V VC50V 0402	14V/50V	~
R2113	Bottom	L	3	0402R	Resistor 5% 63mW	100R	~
R2115	Bottom	H	5	0402R	Resistor 5% 63mW	8k2	~
R2116	Bottom	H	5	0402R	Resistor 5% 63mW	8k2	~
R2117	Bottom	H	5	0402R	Resistor 5% 63mW	100k	~
R2119	Bottom	H	5	0402R	Resistor 5% 63mW	22k	~
R2120	Bottom	H	5	0402R	Resistor 5% 63mW	22k	~
R2137	Bottom	K	5	0402R	Chipres 0W06 jumper 0402	0R	~
R2138	Bottom	L	4	0402R	Chipres 0W06 jumper 0402	0R	~
R2200	Bottom	I	1	0805R_THERM1	CHIPRES 0W25 0R22 J 0805	0R22	~
R2360	Bottom	J	5	0402R	Resistor 5% 63mW	100k	~
R2361	Bottom	I	4	0402R	Resistor 5% 63mW	100k	~
R2362	Bottom	J	4	0402R	Resistor 5% 63mW	4k7	~
R2363	Bottom	J	5	0402R	Resistor 5% 63mW	4k7	~



Item	Side	X	Y	Type	Name	Value	
R2400	Bottom	E	7	0402R	Resistor 5% 63mW	150R	~
R2401	Bottom	I	5	0402R	Resistor 5% 63mW	270R	~
R2402	Top	B	2	0402R	Resistor 5% 63mW	100k	~
R2403	Bottom	D	8	0402R	Resistor 5% 63mW	33R	~
R2404	Bottom	H	8	0402R	Resistor 5% 63mW	47R	~
R2405	Bottom	G	8	0402R	Resistor 5% 63mW	47R	~
R2406	Top	C	6	0402R	Resistor 5% 63mW	47R	~
R2407	Bottom	E	8	0402R	Resistor 5% 63mW	10k	~
R2409	Top	F	6	0402R	Resistor 5% 63mW	47R	~
R2413	Top	N	6	0402R	Resistor 5% 63mW	47R	~
R2414	Top	K	6	0402R	Resistor 5% 63mW	47R	~
R2440	Top	K	3	0402R	Resistor 5% 63mW	47R	~
R2441	Top	N	3	0402R	Resistor 5% 63mW	47R	~
R2442	Top	F	3	0402R	Resistor 5% 63mW	47R	~
R2443	Top	C	3	0402R	Resistor 5% 63mW	47R	~
R2445	Bottom	E	8	0402_VA R	CHIP VARISTOR VWM14V VC50V 0402	14V/50V	~
R2449	Bottom	B	8	0402R	Resistor 5% 63mW	100R	~
R2450	Bottom	B	8	0402_VA R	CHIP VARISTOR VWM14V VC50V 0402	14V/50V	~

Item	Side	X	Y	Type	Name	Value	
R2600	Bottom	C	8	0805R_THERM1	CHIPRES 0W125 4R7 J 0805	4R7	~
R2700	Bottom	L	1	uBGA8	ASIP EMIF03-SIM01F2 **PB-FREE**	~	~
R2701	Bottom	L	1	0402R	Resistor 5% 63mW	10k	~
R2800	Bottom	K	6	0402R	Resistor 5% 63mW	47R	~
R2801	Bottom	K	6	0402R	Resistor 5% 63mW	10k	~
R2802	Bottom	K	8	0402R	Resistor 5% 63mW	10R	~
R2803	Bottom	G	7	0402R	Resistor 5% 63mW	10R	~
R2900	Bottom	I	4	0402R	Resistor 5% 63mW	10k	~
R2901	Bottom	G	7	0402R	Resistor 5% 63mW	100R	~
R2902	Bottom	H	4	0402R	CHIPRES 0W06 27K F 0402	27k	~
R3000	Bottom	L	6	0402R	Resistor 5% 63mW	4k7	~
R3010	Bottom	L	8	0402R	Resistor 5% 63mW	47R	~
R3300	Bottom	G	6	0402R	Resistor 5% 63mW	4k7	~
R3301	Bottom	G	6	0402R	Resistor 5% 63mW	4k7	~
R3303	Bottom	K	6	0402R	Chipres 0W06 100R F 200ppm 0402	100R	~
R3304	Bottom	K	6	0402R	Chipres 0W06 100R F 200ppm 0402	100R	~
R3305	Bottom	J	6	0402R	Resistor 5% 63mW	15k	~
R3400	Bottom	M	2	0402R	Resistor 5% 63mW	22R	~

Item	Side	X	Y	Type	Name	Value	
R3403	Bottom	M	2	0402R	Resistor 5% 63mW	22R	~
R3405	Bottom	M	2	0402R	Resistor 5% 63mW	22R	~
R3701	Bottom	L	6	0402R	Resistor 5% 63mW	100k	~
R6100	Top	O	6	0402R	Resistor 5% 63mW	10k	~
R6101	Top	O	4	0402R	Resistor 5% 63mW	47R	~
R6102	Top	O	6	0402R	Resistor 5% 63mW	100k	~
R6180	Top	O	4	0402R	Resistor 5% 63mW	100R	~
R6181	Top	O	4	0402R	Resistor 5% 63mW	100R	~
R7500	Bottom	F	2	0402R	Chipres 0W06 5R6 J 0402	5R6	~
R7501	Bottom	G	2	0402R	Resistor 5% 63mW	5k6	~
R7502	Bottom	G	2	0402R	Chipres 0W06 6k8 F 0402	6k8	~
R7503	Bottom	G	3	0404_RA C10	RES NETWORK 0W04 2DB ATT 0404	436R/ 11R6/ 436R	~
R7504	Bottom	D	5	0402R	Resistor 5% 63mW	4k7	~
R7505	Bottom	D	4	0402R	Resistor 5% 63mW	4k7	~
R7506	Bottom	E	4	0402R	Resistor 5% 63mW	22k	~
R7508	Bottom	D	5	0402R	Resistor 5% 63mW	10k	~
R7509	Bottom	D	4	0402R	Resistor 5% 63mW	100R	~
R7510	Bottom	D	5	0402R	Resistor 5% 63mW	100R	~

Item	Side	X	Y	Type	Name	Value	
R7511	Bottom	G	3	0402R	Resistor 5% 63mW	4k7	~
R7512	Bottom	F	3	0402R	CHIPRES 0W06 5K6 F 0402	5k6	~
R7513	Bottom	F	5	0402R	Resistor 5% 63mW	15k	~
R7514	Bottom	G	4	0402R	Resistor 5% 63mW	15k	~
R7515	Bottom	F	4	0404_R	RES NETWORK 0W06 2X5K6 J 0404	2x5k6	~
R7516	Bottom	F	4	0404_R	RES NETWORK 0W06 2X5K6 J 0404	2x5k6	~
R7701	Bottom	B	4	0402R	Resistor 5% 63mW	1k0	~
R7702	Bottom	B	4	0402R	Resistor 5% 63mW	4k7	~
R7705	Bottom	C	4	0404_RA C10	RES NETWORK 0W04 1DB ATT 0404	870R/ 5R77/ 870R	~
R7707	Bottom	C	2	0402R	Resistor 5% 63mW	10R	~
R7708	Bottom	C	3	0402R	Chipres 0W06 5R6 J 0402	5R6	~
R7713	Bottom	C	4	0402R	Resistor 5% 63mW	33R	~
R7715	Bottom	C	2	0402R	Resistor 5% 63mW	33R	~
R7717	Bottom	C	3	0402R	Resistor 5% 63mW	820R	~
R7718	Bottom	C	3	0402R	Resistor 5% 63mW	820R	~
R7719	Bottom	B	2	0402R	Chipres 0W06 jumper 0402	0R	~
R7800	Bottom	B	2	0402R	Resistor 5% 63mW	3k3	~
R7801	Bottom	B	2	0402R	Resistor 5% 63mW	10R	~

Item	Side	X	Y	Type	Name	Value	
R7802	Bottom	C	2	0402R	Resistor 5% 63mW	270R	~
S2400	Bottom	B	8	SWITCH_EVQ5P701K	SM SW TACT SPST 12V SIDE KEY 3N	~	~
S2401	Bottom	E	8	SWITCH_EVQ5P701K	SM SW TACT SPST 12V SIDE KEY 3N	~	~
S2405	Bottom	B	1	SWITCH_EVQ5P701K	SM SW TACT SPST 12V SIDE KEY 3N	~	~
S2406	Bottom	E	1	SWITCH_EVQ5P701K	SM SW TACT SPST 12V SIDE KEY 3N	~	~
T7500	Bottom	G	3	TRANS_LDB213	TRANSF BALUN 3600MHZ+-400MHZ	~	~
T7700	Bottom	C	3	TRANS_LDB15	TRANSF BALUN 1800+-100mhz 2x1.25	~	~
T7800	Bottom	C	2	TRANS_LDB15	TRANSF BALUN 1.9GHZ+-100MHZ 2X1.25	~	~
V2000	Bottom	N	2	DIODE_SMF16A	TVS DIODE 16V 175W FLAT-LEAD SMD	~	~
V2400	Top	N	3	LED_LWV18G	LED WHITE 90-345MCD 10MA 90DEG	~	~
V2401	Top	F	6	LED_LWV18G	LED WHITE 90-345MCD 10MA 90DEG	~	~
V2402	Top	F	3	LED_LWV18G	LED WHITE 90-345MCD 10MA 90DEG	~	~
V2403	Top	N	6	LED_LWV18G	LED WHITE 90-345MCD 10MA 90DEG	~	~
V2404	Bottom	E	7	SC79	SCH DI 1PS79SB31 200MA 30V SOD523	~	~
V2405	Top	D	6	LED_LWV18G	LED WHITE 90-345MCD 10MA 90DEG	~	~
V2406	Top	D	3	LED_LWV18G	LED WHITE 90-345MCD 10MA 90DEG	~	~

Item	Side	X	Y	Type	Name	Value	
V2407	Top	J	6	LED_LWV18G	LED WHITE 90-345MCD 10MA 90DEG	~	~
V2416	Bottom	I	5	VMT3_R	TR DTC143ZM N RB=4K7 RBE=47K VMT3	~	~
V2424	Top	J	3	LED_LWV18G	LED WHITE 90-345MCD 10MA 90DEG	~	~
V7800	Bottom	B	2	SOT_363	TR BGA428 LNA1.8GHZ 19.5DB SOT363	~	~
X2000	Bottom	B	7	LYNX_BATT_CONN_H7.4	SM LYNX BATT.CONN 3POL HEIGHT 7.3	~	~
X2003	Bottom	O	5	SYSCON_MQ202_NK_14R3	SM SYSTEM CONNECTOR 14POL	~	~
X2400	Top	B	6	CON_DF30FC_40DS_0.4V	SM B2B 2X20 P0.4 F 30V 0.3A DF30FC-40DS-0.4V	~	~
X2700	Bottom	K	2	SIM_CONN_470191501	SM SIM CONN 6POL P2.54 H1.5	~	~
X3499	Top	C	8	TRACEABILITY_PAD	MODULE ID COMPONENT 2.8X1.8X0.3	~	~
X7800	Bottom	A	6	CONN_RF_WFL_R_SMT	CONN RF 50 OHMS SMT (PWB/WIRE)	~	~
Z2400	Top	O	8	uBGA25_2.69X2.69	ASIP 10-CH ESD EMI FILTER BGA25	~	~
Z2401	Top	N	9	FC6_1.65X1.15	ASIP 2-CH MIC EMI/ESD **PB-FREE**	~	~
Z7700	Bottom	C	4	FILTER_T2B_H0.78	SAW FILT 897.5+-17.5MHZ 2.0X1.6	897.5MHZ	~
Z7800	Bottom	A	3	ANT_SW_5.6X4.2	DIPL+3SW 824-960/1710-1990MHZ 5.4X4	824-960/1710-1990MHZ	~
Z7801	Bottom	A	2	FILTER_T2UB_H0.78	SAW FILT 1960+-30MHZ 2.0X1.6	1960MHZ	~

---

Item	Side	X	Y	Type	Name	Value	
Z780 2	Bot- tom	D	2	FILTER_T 2B_H0.78	SAW 1842.5+-37.5MHZ 2.0X1.6	1842.5M Hz	~
Z780 3	Bot- tom	E	2	FILTER_T 2B_H0.78	SAW 942.5+-17.5MHZ 2.0X1.6	942.5MH z	~

**RM-47 parts list**

Item	Side	X	Y	Typee	Name	Value	
A700 1	Bot- tom	B	3	SHIELD_D MC07388	RF PA SHIELD ASSEM- BLR DMC07388	~	~
A700 2	Bot- tom	F	3	SHIELD_D MC07389	RF HELGO SHIELD ASSEMBLY DMC07389	~	~
A700 3	Bot- tom	J	5	SHIELD_D MC07778	BB1 SHIELD ASSY DMC07778	~	~
A700 4	Bot- tom	E	7	SHIELD_D MC07779	BB2 SHIELD ASSY DMC07779	~	~
B220 0	Bot- tom	I	2	CRYSTAL_ FC_255	CRYSTAL 32.768KHZ+- 20PPM 12.5PF	32.768k Hz	~
C20 00	Bot- tom	H	1	0805C_H1. 0	CHIPCAP X5R 10U M 6V3 T=1.0 0805	10u	6V3
C20 01	Bot- tom	H	1	0805C_H1. 0	CHIPCAP X5R 10U M 6V3 T=1.0 0805	10u	6V3
C20 02	Bot- tom	H	1	0805C_H1. 0	CHIPCAP X5R 10U M 6V3 T=1.0 0805	10u	6V3
C20 03	Bot- tom	C	6	0402C	Chipcap 5% NP0	27p	50V
C20 04	Bot- tom	J	5	0402C	Chipcap X7R 10% 50V 0402	1n0	50V
C20 05	Bot- tom	M	2	0603C	Cer. cap 10% 50V 0603	10n	50V
C20 06	Bot- tom	M	3	0402C	Chipcap 5% NP0	27p	50V
C20 07	Bot- tom	M	5	0405_GNM 23	CHIP ARRAY X5R 2X1U K 6V3 MA 0405	2x1u	6.3 V
C20 08	Bot- tom	K	6	0402C	Chipcap X7R 10% 16V 0402	10n	16V
C20 14	Bot- tom	M	4	0402C	CHIPCAP X5R 100N K 10V 0402	100n	10V
C20 17	Bot- tom	G	7	0805C	CHIPCAP X5R 10U M 6V3 0805	10U	6V3
C20 18	Bot- tom	G	6	0805C	CHIPCAP X5R 10U M 6V3 0805	10U	6V3



Item	Side	X	Y	Typee	Name	Value	
C2019	Bottom	G	6	0805C	CHIPCAP X5R 10U M 6V3 0805	10U	6V3
C2020	Bottom	B	5	POSCAP_T PB_B2	CHIPTCAP 100U M 6.3V 3.5X2.8X2.1	100u_6V3	6V3
C2021	Bottom	C	5	CAP_EEL_0J476R	CHIPTCAP 47U M 6V3 3.5X2.8X1.2	47u_6V3	6V3
C2022	Bottom	M	4	0402C	CHIPCAP NP0 270P J 25V 0402	270p	25V
C2080	Bottom	C	5	0603C	CHIPCAP X5R 1U K 6V3 0603	1u0	6.3V
C2100	Bottom	K	3	0405_2_P0 .65_AVX	CHIP ARRAY X5R 2X33N M 10V 0405	2x33n	10V
C2101	Bottom	K	3	0405_2_P0 .65_AVX	CHIP ARRAY X5R 2X1N M 16V 0405	2x1n	16V
C2103	Bottom	K	1	0405_2_P0 .65_AVX	CHIP ARRAY X5R 2X33N M 10V 0405	2x33n	10V
C2104	Bottom	M	3	0405_2_P0 .65_AVX	CHIP ARRAY X5R 2X10N K 16V 0405	2x10n	16V
C2105	Bottom	M	5	0405_2_P0 .65_AVX	CHIP ARRAY X5R 2X10N K 16V 0405	2x10n	16V
C2106	Bottom	M	3	0405_2_P0 .65_AVX	CHIP ARRAY X5R 2X10N K 16V 0405	2x10n	16V
C2107	Bottom	M	3	0402C	CHIPCAP X5R 100N K 10V 0402	100n	10V
C2108	Bottom	L	3	0603C	CHIPCAP X5R 1U K 6V3 0603	1u0	6.3V
C2109	Bottom	L	3	0402C	Chipcap 5% NP0	68p	50V
C2110	Bottom	K	1	0402C	Chipcap X7R 10% 50V 0402	1n0	50V
C2111	Bottom	K	1	0603C	CHIPCAP X5R 1U K 6V3 0603	1u0	6.3V
C2112	Bottom	K	1	0402C	CHIPCAP X5R 100N K 10V 0402	100n	10V
C2114	Bottom	H	5	0405_2_P0 .65_AVX	CHIP ARRAY X5R 2X33N M 10V 0405	2x33n	10V

Item	Side	X	Y	Typee	Name	Value	
C2116	Bottom	G	5	0603C	CHIPCAP X5R 1U K 6V3 0603	1u0	6.3 V
C2117	Bottom	G	5	0402C	CHIPCAP X5R 100N K 10V 0402	100n	10V
C2118	Bottom	H	5	0402C	Chipcap 5% NP0	100p	50V
C2119	Bottom	H	5	0402C	Chipcap 5% NP0	100p	50V
C2120	Bottom	H	5	0402C	Chipcap 5% NP0	27p	50V
C2121	Bottom	H	5	0402C	Chipcap 5% NP0	27p	50V
C2200	Bottom	I	1	0402C	Chipcap X7R 10% 16V 0402	10n	16V
C2201	Bottom	J	5	0402C	Chipcap X7R 10% 16V 0402	10n	16V
C2202	Bottom	I	1	0402C	Chipcap 5% NP0	10p	50V
C2203	Bottom	J	2	0402C	Chipcap 5% NP0	10p	50V
C2204	Bottom	J	1	0402C	CHIPCAP X5R 100N K 10V 0402	100n	10V
C2205	Bottom	I	4	0402C	CHIPCAP X5R 100N K 10V 0402	100n	10V
C2206	Bottom	I	4	0402C	CHIPCAP X5R 100N K 10V 0402	100n	10V
C2207	Bottom	I	4	0402C	CHIPCAP X5R 100N K 10V 0402	100n	10V
C2208	Bottom	H	2	0402C	CHIPCAP X5R 100N K 10V 0402	100n	10V
C2209	Bottom	H	2	0402C	CHIPCAP X5R 100N K 10V 0402	100n	10V
C2210	Bottom	H	3	0603C	CHIPCAP X5R 1U K 16V 0603	1u0	16V
C2211	Bottom	H	2	0603C	CHIPCAP X5R 1U K 6V3 0603	1u0	6.3 V

Item	Side	X	Y	Typee	Name	Value	
C22 12	Bot- tom	H	2	0603C	CHIPCAP X5R 1U K 6V3 0603	1u0	6.3 V
C22 15	Bot- tom	J	1	0405_GNM 23	CHIP ARRAY X5R 2X1U K 6V3 MA 0405	2x1u	6.3 V
C22 16	Bot- tom	I	1	0405_GNM 23	CHIP ARRAY X5R 2X1U K 6V3 MA 0405	2x1u	6.3 V
C22 17	Bot- tom	I	2	0405_GNM 23	CHIP ARRAY X5R 2X1U K 6V3 MA 0405	2x1u	6.3 V
C22 18	Bot- tom	I	1	0405_GNM 23	CHIP ARRAY X5R 2X1U K 6V3 MA 0405	2x1u	6.3 V
C22 19	Bot- tom	K	4	0405_GNM 23	CHIP ARRAY X5R 2X1U K 6V3 MA 0405	2x1u	6.3 V
C22 20	Bot- tom	J	1	0405_GNM 23	CHIP ARRAY X5R 2X1U K 6V3 MA 0405	2x1u	6.3 V
C22 21	Bot- tom	J	4	0405_GNM 23	CHIP ARRAY X5R 2X1U K 6V3 MA 0405	2x1u	6.3 V
C22 22	Bot- tom	H	3	0405_GNM 23	CHIP ARRAY X5R 2X1U K 6V3 MA 0405	2x1u	6.3 V
C22 23	Bot- tom	H	4	0405_GNM 23	CHIP ARRAY X5R 2X1U K 6V3 MA 0405	2x1u	6.3 V
C22 24	Bot- tom	H	4	0405_GNM 23	CHIP ARRAY X5R 2X1U K 6V3 MA 0405	2x1u	6.3 V
C22 25	Bot- tom	H	4	0405_GNM 23	CHIP ARRAY X5R 2X1U K 6V3 MA 0405	2x1u	6.3 V
C22 26	Bot- tom	I	2	0405_GNM 23	CHIP ARRAY X5R 2X1U K 6V3 MA 0405	2x1u	6.3 V
C22 27	Bot- tom	H	3	0405_GNM 23	CHIP ARRAY X5R 2X1U K 6V3 MA 0405	2x1u	6.3 V
C22 28	Bot- tom	K	4	0405_GNM 23	CHIP ARRAY X5R 2X1U K 6V3 MA 0405	2x1u	6.3 V
C22 30	Bot- tom	H	3	0405_GNM 23	CHIP ARRAY X5R 2X1U K 6V3 MA 0405	2x1u	6.3 V
C23 50	Bot- tom	H	4	0405_GNM 23	CHIP ARRAY X5R 2X1U K 6V3 MA 0405	2x1u	6.3 V
C23 51	Bot- tom	K	5	0405_GNM 23	CHIP ARRAY X5R 2X1U K 6V3 MA 0405	2x1u	6.3 V

Item	Side	X	Y	Typee	Name	Value	
C23 52	Bot- tom	H	2	0405_GNM 23	CHIP ARRAY X5R 2X1U K 6V3 MA 0405	2x1u	6.3 V
C23 60	Bot- tom	I	4	0402C	Chipcap X7R 10% 16V 0402	10n	16V
C23 61	Bot- tom	J	4	0402C	Chipcap X7R 10% 16V 0402	10n	16V
C23 62	Bot- tom	J	1	0402C	Chipcap X7R 10% 50V 0402	1n0	50V
C23 70	Bot- tom	E	7	0805C	CHIPCAP X5R 10U M 6V3 0805	10U	6V3
C23 71	Bot- tom	G	8	0805C	CHIPCAP X5R 10U M 6V3 0805	10U	6V3
C23 72	Bot- tom	G	7	0805C	CHIPCAP X5R 10U M 6V3 0805	10U	6V3
C24 00	Bot- tom	I	5	0405_GNM 23	CHIP ARRAY X5R 2X1U K 6V3 MA 0405	2x1u	6.3 V
C24 01	Bot- tom	I	5	0405_GNM 23	CHIP ARRAY X5R 2X1U K 6V3 MA 0405	2x1u	6.3 V
C24 02	Bot- tom	E	6	0405_GNM 23	CHIP ARRAY X5R 2X1U K 6V3 MA 0405	2x1u	6.3 V
C24 03	Bot- tom	E	6	0405_GNM 23	CHIP ARRAY X5R 2X1U K 6V3 MA 0405	2x1u	6.3 V
C24 04	Top	B	2	0402C	Chipcap 5% NP0	12p	50V
C24 11	Bot- tom	D	8	0402C	Chipcap 5% NP0	47p	50V
C24 12	Bot- tom	E	7	0603C	CHIPCAP X5R 1U K 6V3 0603	1u0	6.3 V
C24 13	Bot- tom	D	8	0805C	CHIPCAP X5R 4U7 K 25V 0805	4u7	25V
C24 15	Bot- tom	E	9	0402C	Chipcap X7R 10% 16V 0402	10n	16V
C24 19	Bot- tom	J	5	0402C	Chipcap X7R 10% 16V 0402	10n	16V
C26 00	Bot- tom	B	8	0805C	CHIPCAP X5R 10U M 6V3 0805	10U	6V3

Item	Side	X	Y	Typee	Name	Value	
C2601	Bottom	C	8	0402C	Chipcap 5% NP0	27p	50V
C2602	Bottom	C	8	0402C	CHIPCAP X5R 100N K 10V 0402	100n	10V
C2603	Bottom	E	8	0402C	CHIPCAP X5R 100N K 10V 0402	100n	10V
C2700	Bottom	L	1	0402C	CHIPCAP X5R 100N K 10V 0402	100n	10V
C2800	Bottom	K	8	0603C	CHIPCAP X5R 1U K 6V3 0603	1u0	6.3 V
C2802	Bottom	K	8	0402C	Chipcap X7R 10% 50V 0402	1n0	50V
C2803	Bottom	G	7	0402C	Chipcap X7R 10% 50V 0402	1n0	50V
C2804	Bottom	G	7	0402C	Chipcap X7R 10% 50V 0402	1n0	50V
C2861	Bottom	G	8	0402C	Chipcap X7R 10% 16V 0402	10n	16V
C2862	Bottom	H	8	0402C	Chipcap X7R 10% 16V 0402	10n	16V
C2863	Bottom	G	8	0402C	Chipcap X7R 10% 16V 0402	10n	16V
C2864	Bottom	K	5	0402C	Chipcap X7R 10% 16V 0402	10n	16V
C2865	Bottom	H	7	0402C	Chipcap X7R 10% 16V 0402	10n	16V
C2866	Bottom	H	7	0402C	Chipcap X7R 10% 16V 0402	10n	16V
C2867	Bottom	H	8	0402C	Chipcap X7R 10% 16V 0402	10n	16V
C2868	Bottom	G	8	0402C	Chipcap X7R 10% 16V 0402	10n	16V
C2869	Bottom	G	8	0402C	Chipcap X7R 10% 16V 0402	10n	16V
C2900	Bottom	H	4	0402C	Chipcap 5% NP0	100p	50V

Item	Side	X	Y	Typee	Name	Value	
C2901	Bot-tom	H	7	0402C	Chipcap 5% NP0	100p	50V
C3000	Bot-tom	L	6	0402C	CHIPCAP X5R 100N K 10V 0402	100n	10V
C3001	Bot-tom	L	6	0402C	Chipcap X7R 10% 16V 0402	10n	16V
C3002	Bot-tom	L	6	0402C	CHIPCAP X5R 100N K 10V 0402	100n	10V
C3003	Bot-tom	M	6	0402C	CHIPCAP X5R 100N K 10V 0402	100n	10V
C3004	Bot-tom	M	6	0402C	Chipcap X7R 10% 16V 0402	10n	16V
C3005	Bot-tom	L	6	0402C	CHIPCAP X5R 100N K 10V 0402	100n	10V
C3010	Bot-tom	M	8	0402C	Chipcap X7R 10% 16V 0402	10n	16V
C3011	Bot-tom	M	6	0603C	CHIPCAP X5R 1U K 6V3 0603	1u0	6.3 V
C3012	Bot-tom	M	6	0402C	Chipcap X7R 10% 16V 0402	10n	16V
C3013	Bot-tom	M	6	0603C	CHIPCAP X5R 1U K 6V3 0603	1u0	6.3 V
C3170	Bot-tom	K	8	0402C	Chipcap 5% NP0	27p	50V
C3303	Bot-tom	G	6	0402C	Chipcap 5% NP0	27p	50V
C3304	Bot-tom	H	6	0402C	Chipcap X7R 10% 16V 0402	10n	16V
C6180	Top	O	4	0402C	CHIPCAP X5R 100N K 10V 0402	100n	10V
C6181	Top	O	4	0402C	CHIPCAP X5R 100N K 10V 0402	100n	10V
C6182	Bot-tom	J	3	0402C	CHIPCAP X5R 100N K 10V 0402	100n	10V
C6183	Bot-tom	J	4	0402C	CHIPCAP X5R 100N K 10V 0402	100n	10V

Item	Side	X	Y	Typee	Name	Value	
C61 84	Top	O	4	0402C	CHIPCAP X5R 100N K 10V 0402	100n	10V
C61 85	Top	P	4	0402C	CHIPCAP X5R 100N K 10V 0402	100n	10V
C75 00	Bot- tom	F	2	0402C	CHIPCAP X5R 100N K 10V 0402	100n	10V
C75 02	Bot- tom	G	1	0402C	CHIPCAP NP0 180P J 25V 0402	180p	25V
C75 03	Bot- tom	G	2	0603C	CHIPCAP NP0 2N7 G 50V 0603	2n7	50V
C75 04	Bot- tom	F	2	0402C	CHIPCAP NP0 270P J 25V 0402	270p	25V
C75 06	Bot- tom	D	5	0402C	Chipcap 5% NP0	100p	50V
C75 08	Bot- tom	D	4	0603C	CHIPCAP NP0 2N2 J 16V 0603	2n2	16V
C75 09	Bot- tom	E	5	0603C	CHIPCAP NP0 1N0 J 50V 0603	1n0	50V
C75 10	Bot- tom	E	5	0402C	Chipcap 5% NP0	56p	50V
C75 12	Bot- tom	E	5	0402C	Chipcap X7R 10% 16V 0402	10n	16V
C75 13	Bot- tom	E	5	0402C	Chipcap 5% NP0	18p	50V
C75 16	Bot- tom	F	4	0402C	Chipcap 5% NP0	27p	50V
C75 18	Bot- tom	F	4	0402C	CHIPCAP X5R 100N K 10V 0402	100n	10V
C75 19	Bot- tom	F	3	0402C	Chipcap X7R 10% 16V 0402	10n	16V
C75 20	Bot- tom	F	4	0402C	Chipcap 5% NP0	10p	50V
C75 21	Bot- tom	F	3	0402C	CHIPCAP X5R 100N K 10V 0402	100n	10V
C75 22	Bot- tom	F	4	0402C	Chipcap X7R 10% 16V 0402	10n	16V

Item	Side	X	Y	Typee	Name	Value	
C75 24	Bot- tom	F	4	0402C	CHIPCAP X5R 100N K 10V 0402	100n	10V
C75 25	Bot- tom	F	4	0402C	Chipcap 5% NP0	100p	50V
C75 26	Bot- tom	F	5	0402C	CHIPCAP X5R 100N K 10V 0402	100n	10V
C75 27	Bot- tom	F	5	0402C	CHIPCAP X5R 100N K 10V 0402	100n	10V
C75 28	Bot- tom	G	4	0402C	Chipcap 5% NP0	82p	50V
C75 29	Bot- tom	F	4	0402C	Chipcap 5% NP0	47p	50V
C75 30	Bot- tom	F	4	0402C	Chipcap 5% NP0	47p	50V
C75 31	Bot- tom	D	2	0402C	Chipcap 5% NP0	18p	50V
C75 32	Bot- tom	C	4	0402C	Chipcap 5% NP0	27p	50V
C75 35	Bot- tom	E	3	0402C	CHIPCAP NP0 470P J 6V3 0402	470p	6V3
C75 36	Bot- tom	F	3	0402C	CHIPCAP NP0 470P J 6V3 0402	470p	6V3
C75 37	Bot- tom	F	3	0402C	CHIPCAP NP0 470P J 6V3 0402	470p	6V3
C75 38	Bot- tom	F	3	0402C	CHIPCAP NP0 470P J 6V3 0402	470p	6V3
C75 39	Bot- tom	F	2	0402C	Chipcap 5% NP0	10p	50V
C77 02	Bot- tom	B	4	0402C	Chipcap X7R 10% 50V 0402	1n0	50V
C77 04	Bot- tom	B	3	0402C	Chipcap +-0.25pF NP0	1p0	50V
C77 05	Bot- tom	B	4	0805C	CHIPCAP X5R 4U7 K 6V3 0805	4u7	6V3
C77 06	Bot- tom	A	4	0402C	Chipcap 5% NP0	27p	50V



Item	Side	X	Y	Typee	Name	Value	
C7707	Bottom	C	4	0402C	Chipcap 5% NP0	56p	50V
C7708	Bottom	C	4	0402C	Chipcap 5% NP0	12p	50V
C7711	Bottom	C	2	0402C	Chipcap X7R 10% 50V 0402	1n0	50V
C7712	Bottom	C	4	0402C	Chipcap X7R 10% 16V 0402	10n	16V
C7713	Bottom	C	2	0402C	Chipcap 5% NP0	15p	50V
C7714	Bottom	D	2	0402C	Chipcap 5% NP0	15p	50V
C7716	Bottom	C	2	0402C	Chipcap X7R 10% 16V 0402	10n	16V
C7720	Bottom	D	4	0402C	Chipcap X7R 10% 16V 0402	10n	16V
C7800	Bottom	B	2	0402C	Chipcap 5% NP0	100p	50V
C7801	Bottom	B	2	0402C	Chipcap +-0.25pF NP0	3p3	50V
C7802	Bottom	B	2	0402C	CHIPCAP X5R 100N K 10V 0402	100n	10V
C7803	Bottom	B	2	0402C	Chipcap 5% NP0	15p	50V
C7804	Bottom	C	2	0402C	Chipcap +-0.25pF NP0	1p2	50V
C7805	Bottom	D	3	0402C	Chipcap 5% NP0	15p	50V
C7806	Bottom	D	3	0402C	Chipcap 5% NP0	15p	50V
D2200	Bottom	I	3	TFBGA_244	UEMEK2V0 LF WDENA TFBGA244	~	~
D2400	Bottom	E	6	USMD14_2 .433X2.11A BC_0.675	REG LM2795TLX-NOPB 2.4X2.0X0.8MM	~	~
D2401	Bottom	I	5	USMD14_2 .433X2.11A BC_0.675	REG LM2795TLX-NOPB 2.4X2.0X0.8MM	~	~

Item	Side	X	Y	Typee	Name	Value	
D2800	Bottom	I	7	uBGA_289	TIKUEDGE 1.1 F751728A C035 288UBGA	~	~
D3000	Bottom	K	7	PBFREEFB GA40_128 MB_54MHZ _MAX	FLASH 8MX16 1.8/1.8V FBGA44	8Mx16	~
D3001	Bottom	M	7	WBGA_60_ 8.1X6.6	SDRAM 4X16 1.8V/1.8V FBGA60 PBFREE	4Mx16	~
F2000	Bottom	N	3	0402_FUS E_H0.5	SM FUSE FF 1.5A 32V 0402	1.5A	~
G7500	Bottom	F	2	VCO_DCS 02733	VCO 3296-3980MHZ 4- BAND MATSUSHITA	3296- 3980MH Z	~
G7501	Bottom	F	5	NGK3138C	VCTCXO 26MHZ +- 3PPM 2.7v 1.3MA GSM	26MHz	~
L2000	Bottom	N	3	0805_BLM 21	FERR.BEAD 0R03 42R/ 100MHZ 3A 0805	42R/ 100MHz	~
L2001	Bottom	M	4	0603_BLM	FERRITE BEAD 0R5 600R/100MHZ 0603	600R/ 100MHz	~
L2002	Bottom	M	5	0603_BLM	FERRITE BEAD 0R5 600R/100MHZ 0603	600R/ 100MHz	~
L2003	Bottom	M	4	FERRITE_ 0402	FERRITE BEAD 0.6R 600R/100MHZ 0402	600R/ 100MHz	~
L2100	Bottom	L	4	FERRITE_ 0402	FERRITE BEAD 0.6R 600R/100MHZ 0402	600R/ 100MHz	~
L2101	Bottom	M	3	0405_2_H1 .0	CHIP BEAD ARRAY 2X1000R 0405	2x1000 R/ 100MHz	~
L2102	Bottom	M	4	0405_2_H1 .0	CHIP BEAD ARRAY 2X1000R 0405	2x1000 R/ 100MHz	~
L2103	Bottom	M	5	0405_2_H1 .0	CHIP BEAD ARRAY 2X1000R 0405	2x1000 R/ 100MHz	~
L2104	Bottom	H	5	FERRITE_ 0402	FERRITE BEAD 0.6R 600R/100MHZ 0402	600R/ 100MHz	~
L2105	Bottom	I	5	FERRITE_ 0402	FERRITE BEAD 0.6R 600R/100MHZ 0402	600R/ 100MHz	~

Item	Side	X	Y	Typee	Name	Value	
L2200	Bottom	J	4	FERRITE_BK1608	FERRITE BEAD 0R3 47/100MHZ 0603	47R/100MHz	~
L2350	Bottom	H	4	0603_BLM	FERRITE BEAD 0R5 600R/100MHZ 0603	600R/100MHz	~
L2351	Bottom	J	5	0603_BLM	FERRITE BEAD 0R5 600R/100MHZ 0603	600R/100MHz	~
L2352	Bottom	H	2	0603_BLM	FERRITE BEAD 0R5 600R/100MHZ 0603	600R/100MHz	~
L2353	Bottom	H	5	0603_BLM	FERRITE BEAD 0R5 600R/100MHZ 0603	600R/100MHz	~
L2354	Bottom	H	3	0603_BLM	FERRITE BEAD 0R5 600R/100MHZ 0603	600R/100MHz	~
L2355	Bottom	J	5	0603_BLM	FERRITE BEAD 0R5 600R/100MHZ 0603	600R/100MHz	~
L2370	Bottom	F	7	CHOKE_D412F	CHOKE 10U 0R33 0.77A 4.6X4.6X1.2	10uH	~
L2400	Bottom	D	6	CHOKE_D3312FB_H1.4	CHOKE 22U M0.33A 1R5 3.3X3.3X1.3	22uH	~
L2401	Bottom	J	5	0603_BLM	FERRITE BEAD 0R5 600R/100MHZ 0603	600R/100MHz	~
L3170	Bottom	L	8	FERRITE_0402	FERRITE BEAD 0.6R 600R/100MHZ 0402	600R/100MHz	~
L7500	Bottom	E	4	0402_ELJRF	CHIP COIL 5N6+-0N3 Q7/100M 0402	5n6H	~
L7501	Bottom	E	4	0402_ELJRF	CHIP COIL 5N6+-0N3 Q7/100M 0402	5n6H	~
L7502	Bottom	E	4	0402L	CHIP COIL 3N3 +-0N3 Q28/800M 0402	3n3H	~
L7503	Bottom	E	4	0402L	CHIP COIL 3N3 +-0N3 Q28/800M 0402	3n3H	~
L7700	Bottom	B	4	0805_BLM21	FERR.BEAD 0R03 42R/100MHZ 3A 0805	42R/100MHz	~
L7800	Bottom	B	2	0402L	CHIP COIL 3N3 +-0N3 Q28/800M 0402	3n3H	~
L7801	Bottom	C	2	0402L	CHIP COIL 3N3 +-0N3 Q28/800M 0402	3n3H	~

Item	Side	X	Y	Typee	Name	Value	
L780 2	Bot- tom	E	2	0402L	CHIP COIL 4N7 +-0N3 Q28/800M 0402	4n7H	~
L780 3	Bot- tom	D	2	0402L	CHIP COIL 4N7 +-0N3 Q28/800M 0402	4n7H	~
L780 4	Bot- tom	E	2	0402L	CHIP COIL 15N J Q30/ 800M 0402	15nH	~
L780 5	Bot- tom	E	2	0402L	CHIP COIL 15N J Q30/ 800M 0402	15nH	~
L780 7	Bot- tom	E	3	0402L	CHIP COIL 8N2 J Q28/ 800MHZ 0402	8n2H	~
N20 00	Bot- tom	K	5	BCC_16	NUT/CP2137 ASIC HBCC16++	~	~
N20 80	Bot- tom	D	5	USMD10_2 .08X1.57_H 0.675	CURRENT SENS LM3820 USMD10 PB- FREE	~	~
N21 00	Bot- tom	H	5	USMD9_1. 544X1.544 _0.675	AF AMP 0.4W LM4890/ NCP2890 PBFREE	~	~
N23 70	Bot- tom	E	7	USMD_10_ 2.458X1.89 9	DC-DC CONV LM2708HTLX-1.57V/ 1.35V USMD10	~	~
N24 00	Bot- tom	D	7	SOT23L_8	DC/DC CONV 350MA TK11851 SOP8	~	~
N24 01	Top	B	2	SH248CSP	HALL IC SWITCH SH248CSP VCC	~	~
N26 00	Bot- tom	D	8	IRDA_CIM_ 50M5_T	IRDA CIM-50M5A **RESERVED**	~	~
N75 00	Bot- tom	E	3	TFBGA88	HELGO86G LB	~	~
N77 00	Bot- tom	C	3	RF_PA_PF 79001B_6. 2X5.2A	PW AMP RF9250E4.1 MICRO GSM/EDGE	~	~
R20 00	Top	O	4	0402_NTH 5	NTC RES 47K J B=4050+-3% 0402	47k	~
R20 01	Bot- tom	M	4	0402R	Resistor 5% 63mW	100k	~
R20 04	Bot- tom	M	5	0402R	Resistor 5% 63mW	220k	~

Item	Side	X	Y	Typee	Name	Value	
R2005	Bottom	L	5	0402R	Resistor 5% 63mW	220k	~
R2006	Bottom	M	5	0402_VAR	CHIP VARISTOR VWM14V VC50V 0402	14V/50V	~
R2009	Bottom	L	5	uBGA_10_1.7X2.05	ASIP USB2 FILTER BGA10**PBFREE**	~	~
R2010	Bottom	M	5	0402R	Resistor 5% 63mW	33R	~
R2015	Bottom	C	6	0402_VAR	CHIP VARISTOR VWM14V VC50V 0402	14V/50V	~
R2081	Bottom	C	5	0402R	Resistor 5% 63mW	2k2	~
R2082	Bottom	C	5	0402R	Resistor 5% 63mW	2k2	~
R2100	Bottom	L	3	MNR02_SR	RES NETWORK 0W06 2X2K2 J 0404	2x2k2	~
R2101	Bottom	M	3	MNR02_SR	RES NETWORK 0W06 2X10R J 0404	2x10R	~
R2102	Bottom	M	4	MNR02_SR	RES NETWORK 0W06 2X10R J 0404	2x10R	~
R2104	Bottom	L	3	0402R	Resistor 5% 63mW	2k2	~
R2105	Bottom	K	1	0402R	Resistor 5% 63mW	100R	~
R2106	Bottom	K	1	0402R	Resistor 5% 63mW	10k	~
R2107	Bottom	K	1	uBGA11_2.15X1.65	ASIP MIC W/ESD RES+CAP+ZDI BGA11	~	~
R2109	Bottom	M	4	0402_VAR	CHIP VARISTOR VWM14V VC50V 0402	14V/50V	~
R2110	Bottom	M	4	0402_VAR	CHIP VARISTOR VWM14V VC50V 0402	14V/50V	~
R2111	Bottom	M	5	0402_VAR	CHIP VARISTOR VWM14V VC50V 0402	14V/50V	~
R2112	Bottom	M	5	0402_VAR	CHIP VARISTOR VWM14V VC50V 0402	14V/50V	~

Item	Side	X	Y	Typee	Name	Value	
R2113	Bottom	L	3	0402R	Resistor 5% 63mW	100R	~
R2115	Bottom	H	5	0402R	Resistor 5% 63mW	8k2	~
R2116	Bottom	H	5	0402R	Resistor 5% 63mW	8k2	~
R2117	Bottom	H	5	0402R	Resistor 5% 63mW	100k	~
R2119	Bottom	H	5	0402R	Resistor 5% 63mW	22k	~
R2120	Bottom	H	5	0402R	Resistor 5% 63mW	22k	~
R2137	Bottom	K	5	0402R	Chipres 0W06 jumper 0402	0R	~
R2138	Bottom	L	4	0402R	Chipres 0W06 jumper 0402	0R	~
R2200	Bottom	I	1	0805R_THERM1	CHIPRES 0W25 0R22 J 0805	0R22	~
R2360	Bottom	J	5	0402R	Resistor 5% 63mW	100k	~
R2361	Bottom	I	4	0402R	Resistor 5% 63mW	100k	~
R2362	Bottom	J	4	0402R	Resistor 5% 63mW	4k7	~
R2363	Bottom	J	5	0402R	Resistor 5% 63mW	4k7	~
R2400	Bottom	E	7	0402R	Resistor 5% 63mW	150R	~
R2401	Bottom	I	5	0402R	Resistor 5% 63mW	270R	~
R2402	Top	B	2	0402R	Resistor 5% 63mW	100k	~
R2403	Bottom	D	8	0402R	Resistor 5% 63mW	33R	~
R2404	Bottom	H	8	0402R	Resistor 5% 63mW	47R	~

Item	Side	X	Y	Typee	Name	Value	
R2405	Bottom	G	8	0402R	Resistor 5% 63mW	47R	~
R2406	Top	C	6	0402R	Resistor 5% 63mW	47R	~
R2407	Bottom	E	8	0402R	Resistor 5% 63mW	10k	~
R2409	Top	F	6	0402R	Resistor 5% 63mW	47R	~
R2413	Top	N	6	0402R	Resistor 5% 63mW	47R	~
R2414	Top	K	6	0402R	Resistor 5% 63mW	47R	~
R2440	Top	K	3	0402R	Resistor 5% 63mW	47R	~
R2441	Top	N	3	0402R	Resistor 5% 63mW	47R	~
R2442	Top	F	3	0402R	Resistor 5% 63mW	47R	~
R2443	Top	C	3	0402R	Resistor 5% 63mW	47R	~
R2445	Bottom	E	8	0402_VAR	CHIP VARISTOR VWM14V VC50V 0402	14V/50V	~
R2449	Bottom	B	8	0402R	Resistor 5% 63mW	100R	~
R2450	Bottom	B	8	0402_VAR	CHIP VARISTOR VWM14V VC50V 0402	14V/50V	~
R2600	Bottom	C	8	0805R_TH ERM1	CHIPRES 0W125 4R7 J 0805	4R7	~
R2700	Bottom	L	1	uBGA8	ASIP EMIF03-SIM01F2 **PB-FREE**	~	~
R2701	Bottom	L	1	0402R	Resistor 5% 63mW	10k	~
R2800	Bottom	K	6	0402R	Resistor 5% 63mW	47R	~
R2801	Bottom	K	6	0402R	Resistor 5% 63mW	10k	~

Item	Side	X	Y	Typee	Name	Value	
R2802	Bot-tom	K	8	0402R	Resistor 5% 63mW	10R	~
R2803	Bot-tom	G	7	0402R	Resistor 5% 63mW	10R	~
R2900	Bot-tom	I	4	0402R	Resistor 5% 63mW	10k	~
R2901	Bot-tom	G	7	0402R	Resistor 5% 63mW	100R	~
R2902	Bot-tom	H	4	0402R	CHIPRES 0W06 27K F 0402	27k	~
R3000	Bot-tom	L	6	0402R	Resistor 5% 63mW	4k7	~
R3010	Bot-tom	L	8	0402R	Resistor 5% 63mW	47R	~
R3300	Bot-tom	G	6	0402R	Resistor 5% 63mW	4k7	~
R3301	Bot-tom	G	6	0402R	Resistor 5% 63mW	4k7	~
R3303	Bot-tom	K	6	0402R	Chipres 0W06 100R F 200ppm 0402	100R	~
R3304	Bot-tom	K	6	0402R	Chipres 0W06 100R F 200ppm 0402	100R	~
R3305	Bot-tom	J	6	0402R	Resistor 5% 63mW	15k	~
R3400	Bot-tom	M	2	0402R	Resistor 5% 63mW	22R	~
R3403	Bot-tom	M	2	0402R	Resistor 5% 63mW	22R	~
R3405	Bot-tom	M	2	0402R	Resistor 5% 63mW	22R	~
R3701	Bot-tom	L	6	0402R	Resistor 5% 63mW	100k	~
R7500	Bot-tom	F	2	0402R	Chipres 0W06 5R6 J 0402	5R6	~
R7501	Bot-tom	G	2	0402R	Resistor 5% 63mW	5k6	~



Item	Side	X	Y	Typee	Name	Value	
R7502	Bot- tom	G	2	0402R	Chipres 0W06 6k8 F 0402	6k8	~
R7503	Bot- tom	G	3	0404_RAC 10	RES NETWORK 0W04 2DB ATT 0404	436R/ 11R6/ 436R	~
R7504	Bot- tom	D	5	0402R	Resistor 5% 63mW	4k7	~
R7505	Bot- tom	D	4	0402R	Resistor 5% 63mW	4k7	~
R7506	Bot- tom	E	4	0402R	Resistor 5% 63mW	22k	~
R7508	Bot- tom	D	5	0402R	Resistor 5% 63mW	10k	~
R7509	Bot- tom	D	4	0402R	Resistor 5% 63mW	100R	~
R7510	Bot- tom	D	5	0402R	Resistor 5% 63mW	100R	~
R7511	Bot- tom	G	3	0402R	Resistor 5% 63mW	4k7	~
R7512	Bot- tom	F	3	0402R	CHIPRES 0W06 5K6 F 0402	5k6	~
R7513	Bot- tom	F	5	0402R	Resistor 5% 63mW	15k	~
R7514	Bot- tom	G	4	0402R	Resistor 5% 63mW	15k	~
R7515	Bot- tom	F	4	0404_R	RES NETWORK 0W06 2X5K6 J 0404	2x5k6	~
R7516	Bot- tom	F	4	0404_R	RES NETWORK 0W06 2X5K6 J 0404	2x5k6	~
R7701	Bot- tom	B	4	0402R	Resistor 5% 63mW	1k0	~
R7702	Bot- tom	B	4	0402R	Resistor 5% 63mW	4k7	~
R7705	Bot- tom	C	4	0404_RAC 10	RES NETWORK 0W04 1DB ATT 0404	870R/ 5R77/ 870R	~
R7707	Bot- tom	C	2	0402R	Resistor 5% 63mW	10R	~

Item	Side	X	Y	Typee	Name	Value	
R7708	Bottom	C	3	0402R	Chipres 0W06 5R6 J 0402	5R6	~
R7713	Bottom	C	4	0402R	Resistor 5% 63mW	33R	~
R7715	Bottom	C	2	0402R	Resistor 5% 63mW	33R	~
R7717	Bottom	C	3	0402R	Resistor 5% 63mW	820R	~
R7718	Bottom	C	3	0402R	Resistor 5% 63mW	820R	~
R7719	Bottom	B	2	0402R	Chipres 0W06 jumper 0402	0R	~
R7800	Bottom	B	2	0402R	Resistor 5% 63mW	3k3	~
R7801	Bottom	B	2	0402R	Resistor 5% 63mW	10R	~
R7802	Bottom	C	2	0402R	Resistor 5% 63mW	270R	~
S2400	Bottom	B	8	SWITCH_E VQ5P701K	SM SW TACT SPST 12V SIDE KEY 3N	~	~
S2401	Bottom	E	8	SWITCH_E VQ5P701K	SM SW TACT SPST 12V SIDE KEY 3N	~	~
S2405	Bottom	B	1	SWITCH_E VQ5P701K	SM SW TACT SPST 12V SIDE KEY 3N	~	~
S2406	Bottom	E	1	SWITCH_E VQ5P701K	SM SW TACT SPST 12V SIDE KEY 3N	~	~
T7500	Bottom	G	3	TRANS_LD B213	TRANSF BALUN 3600MHZ+-400MHZ	~	~
T7700	Bottom	C	3	TRANS_LD B15	TRANSF BALUN 1800+-100mhz 2x1.25	~	~
T7800	Bottom	C	2	TRANS_LD B15	TRANSF BALUN 1.9GHZ+-100MHZ 2X1.25	~	~
V2000	Bottom	N	2	DIODE_SM F16A	TVS DIODE 16V 175W FLAT-LEAD SMD	~	~
V2400	Top	N	3	LED_CL480	LED BLUE 11-53MCD 5MA 90DEG 0603	~	~

Item	Side	X	Y	Typee	Name	Value	
V240 1	Top	F	6	LED_CL48 0	LED BLUE 11-53MCD 5MA 90DEG 0603	~	~
V240 2	Top	F	3	LED_CL48 0	LED BLUE 11-53MCD 5MA 90DEG 0603	~	~
V240 3	Top	N	6	LED_CL48 0	LED BLUE 11-53MCD 5MA 90DEG 0603	~	~
V240 4	Bot- tom	E	7	SC79	SCH DI 1PS79SB31 200MA 30V SOD523	~	~
V240 5	Top	D	6	LED_CL48 0	LED BLUE 11-53MCD 5MA 90DEG 0603	~	~
V240 6	Top	D	3	LED_CL48 0	LED BLUE 11-53MCD 5MA 90DEG 0603	~	~
V240 7	Top	J	6	LED_CL48 0	LED BLUE 11-53MCD 5MA 90DEG 0603	~	~
V241 6	Bot- tom	I	5	VMT3_R	TR DTC143ZM N RB=4K7 RBE=47K VMT3	~	~
V242 4	Top	J	3	LED_CL48 0	LED BLUE 11-53MCD 5MA 90DEG 0603	~	~
V780 0	Bot- tom	B	2	SOT_363	TR BGA428 LNA1.8GHZ 19.5DB SOT363	~	~
X200 0	Bot- tom	B	7	LYNX_BAT T_CONN_ H7.4	SM LYNX BATT.CONN 3POL HEIGHT 7.3	~	~
X200 3	Bot- tom	O	5	SYSCON_ MQ202_NK _14R3	SM SYSTEM CONNEC- TOR 14POL	~	~
X240 0	Top	B	6	CON_DF30 FC_40DS_ 0.4V	SM B2B 2X20 P0.4 F 30V 0.3A DF30FC- 40DS-0.4V	~	~
X270 0	Bot- tom	K	2	SIM_CONN _47019150 1	SM SIM CONN 6POL P2.54 H1.5	~	~
X349 9	Top	C	8	TRACEABI LITY_PAD	MODULE ID COMPO- NENT 2.8X1.8X0.3	~	~
X780 0	Bot- tom	A	6	CONN_RF _WFL_R_S MT	CONN RF 50 OHMS SMT (PWB/WIRE)	~	~

Item	Side	X	Y	Typee	Name	Value	
Z2400	Top	O	8	uBGA25_2.69X2.69	ASIP 10-CH ESD EMI FILTER BGA25	~	~
Z2401	Top	N	9	FC6_1.65X1.15	ASIP 2-CH MIC EMI/ESD **PB-FREE**	~	~
Z7700	Bottom	C	4	FILTER_T2 B_H0.78	SAW FILT 897.5+-17.5MHZ 2.0X1.6	897.5M Hz	~
Z7800	Bottom	A	3	ANT_SW_5 .6X4.2	DIPL+3SW 824-960/1710-1990MHZ 5.4X4	824-960/1710-1990MHZ	~
Z7801	Bottom	A	2	FILTER_T2 UB_H0.78	SAW FILT 1960+-30MHZ 2.0X1.6	1960MHZ	~
Z7802	Bottom	D	2	FILTER_T2 B_H0.78	SAW 1842.5+-37.5MHZ 2.0X1.6	1842.5M Hz	~
Z7803	Bottom	E	2	FILTER_T2 B_H0.78	SAW 942.5+-17.5MHZ 2.0X1.6	942.5M Hz	~

## RM-48 parts list

Table 5:

Item	Side	X	Y	Type	Name	Name	Value	
A700 1	Bot- tom	B	3	SHIELD_D MC07388		RF PA SHIELD ASSEM- BLR DMC07388	~	~
A700 2	Bot- tom	F	3	SHIELD_D MC07389		RF HELGO SHIELD ASSEM- BLY DMC07389	~	~
A700 3	Bot- tom	J	5	SHIELD_D MC07778		BB1 SHIELD ASSY DMC07778	~	~
A700 4	Bot- tom	E	7	SHIELD_D MC07779		BB2 SHIELD ASSY DMC07779	~	~
B220 0	Bot- tom	I	2	CRYSTAL_ FC_255		CRYSTAL 32.768KHZ +-20PPM 12.5PF	32.768kHz	~
C20 00	Bot- tom	H	1	0805C_H1. 0		CHIPCAP X5R 10U M 6V3 T=1.0 0805	10u	6V3
C20 01	Bot- tom	H	1	0805C_H1. 0		CHIPCAP X5R 10U M 6V3 T=1.0 0805	10u	6V3
C20 02	Bot- tom	H	1	0805C_H1. 0		CHIPCAP X5R 10U M 6V3 T=1.0 0805	10u	6V3
C20 03	Bot- tom	C	6	0402C	Chipcap 5% NP0		27p	50V

**Table 5:**

Item	Side	X	Y	Type	Name	Name	Value	
C20 04	Bot- tom	J	5	0402C	Chipcap X7R 10% 50V 0402		1n0	50V
C20 05	Bot- tom	M	2	0603C	Cer. cap 10% 50V 0603		10n	50V
C20 06	Bot- tom	M	3	0402C	Chipcap 5% NP0		27p	50V
C20 07	Bot- tom	M	5	0405_GNM 23		CHIP ARRAY X5R 2X1U K 6V3 MA 0405	2x1u	6.3 V
C20 08	Bot- tom	K	6	0402C	Chipcap X7R 10% 16V 0402		10n	16V
C20 14	Bot- tom	M	4	0402C	CHIPCAP X5R 100N K 10V 0402		100n	10V
C20 17	Bot- tom	G	7	0805C	CHIPCAP X5R 10U M 6V3 0805		10U	6V3
C20 18	Bot- tom	G	6	0805C	CHIPCAP X5R 10U M 6V3 0805		10U	6V3
C20 19	Bot- tom	G	6	0805C	CHIPCAP X5R 10U M 6V3 0805		10U	6V3
C20 20	Bot- tom	B	5	POSCAP_T PB_B2		CHIPTCAP 100U M 6.3V 3.5X2.8X2. 1	100u_6V3	6V3
C20 21	Bot- tom	C	5	CAP_EEL_ 0J476R		CHIPT- CAP 47U M 6V3 3.5X2.8X1. 2	47u_6V3	6V3

Table 5:

Item	Side	X	Y	Type	Name	Name	Value	
C20 22	Bot- tom	M	4	0402C	CHIPCAP NP0 270P J 25V 0402		270p	25V
C20 80	Bot- tom	C	5	0603C	CHIPCAP X5R 1U K 6V3 0603		1u0	6.3 V
C21 00	Bot- tom	K	3	0405_2_P0 .65_AVX		CHIP ARRAY X5R 2X33N M 10V 0405	2x33n	10V
C21 01	Bot- tom	K	3	0405_2_P0 .65_AVX		CHIP ARRAY X5R 2X1N M 16V 0405	2x1n	16V
C21 03	Bot- tom	K	1	0405_2_P0 .65_AVX		CHIP ARRAY X5R 2X33N M 10V 0405	2x33n	10V
C21 04	Bot- tom	M	3	0405_2_P0 .65_AVX		CHIP ARRAY X5R 2X10N K 16V 0405	2x10n	16V
C21 05	Bot- tom	M	5	0405_2_P0 .65_AVX		CHIP ARRAY X5R 2X10N K 16V 0405	2x10n	16V
C21 06	Bot- tom	M	3	0405_2_P0 .65_AVX		CHIP ARRAY X5R 2X10N K 16V 0405	2x10n	16V
C21 07	Bot- tom	M	3	0402C	CHIPCAP X5R 100N K 10V 0402		100n	10V
C21 08	Bot- tom	L	3	0603C	CHIPCAP X5R 1U K 6V3 0603		1u0	6.3 V
C21 09	Bot- tom	L	3	0402C	Chipcap 5% NP0		68p	50V

**Table 5:**

Item	Side	X	Y	Type	Name	Name	Value	
C2110	Bottom	K	1	0402C	Chipcap X7R 10% 50V 0402		1n0	50V
C2111	Bottom	K	1	0603C	CHIPCAP X5R 1U K 6V3 0603		1u0	6.3 V
C2112	Bottom	K	1	0402C	CHIPCAP X5R 100N K 10V 0402		100n	10V
C2114	Bottom	H	5	0405_2_P0 .65_AVX		CHIP ARRAY X5R 2X33N M 10V 0405	2x33n	10V
C2116	Bottom	G	5	0603C	CHIPCAP X5R 1U K 6V3 0603		1u0	6.3 V
C2117	Bottom	G	5	0402C	CHIPCAP X5R 100N K 10V 0402		100n	10V
C2118	Bottom	H	5	0402C	Chipcap 5% NP0		100p	50V
C2119	Bottom	H	5	0402C	Chipcap 5% NP0		100p	50V
C2120	Bottom	H	5	0402C	Chipcap 5% NP0		27p	50V
C2121	Bottom	H	5	0402C	Chipcap 5% NP0		27p	50V
C2200	Bottom	I	1	0402C	Chipcap X7R 10% 16V 0402		10n	16V
C2201	Bottom	J	5	0402C	Chipcap X7R 10% 16V 0402		10n	16V
C2202	Bottom	I	1	0402C	Chipcap 5% NP0		10p	50V
C2203	Bottom	J	2	0402C	Chipcap 5% NP0		10p	50V



Table 5:

Item	Side	X	Y	Type	Name	Name	Value	
C22 04	Bot- tom	J	1	0402C	CHIPCAP X5R 100N K 10V 0402		100n	10V
C22 05	Bot- tom	I	4	0402C	CHIPCAP X5R 100N K 10V 0402		100n	10V
C22 06	Bot- tom	I	4	0402C	CHIPCAP X5R 100N K 10V 0402		100n	10V
C22 07	Bot- tom	I	4	0402C	CHIPCAP X5R 100N K 10V 0402		100n	10V
C22 08	Bot- tom	H	2	0402C	CHIPCAP X5R 100N K 10V 0402		100n	10V
C22 09	Bot- tom	H	2	0402C	CHIPCAP X5R 100N K 10V 0402		100n	10V
C22 10	Bot- tom	H	3	0603C	CHIPCAP X5R 1U K 16V 0603		1u0	16V
C22 11	Bot- tom	H	2	0603C	CHIPCAP X5R 1U K 6V3 0603		1u0	6.3 V
C22 12	Bot- tom	H	2	0603C	CHIPCAP X5R 1U K 6V3 0603		1u0	6.3 V
C22 15	Bot- tom	J	1	0405_GNM 23		CHIP ARRAY X5R 2X1U K 6V3 MA 0405	2x1u	6.3 V
C22 16	Bot- tom	I	1	0405_GNM 23		CHIP ARRAY X5R 2X1U K 6V3 MA 0405	2x1u	6.3 V

**Table 5:**

Item	Side	X	Y	Type	Name	Name	Value	
C22 17	Bot- tom	I	2	0405_GNM 23		CHIP ARRAY X5R 2X1U K 6V3 MA 0405	2x1u	6.3 V
C22 18	Bot- tom	I	1	0405_GNM 23		CHIP ARRAY X5R 2X1U K 6V3 MA 0405	2x1u	6.3 V
C22 19	Bot- tom	K	4	0405_GNM 23		CHIP ARRAY X5R 2X1U K 6V3 MA 0405	2x1u	6.3 V
C22 20	Bot- tom	J	1	0405_GNM 23		CHIP ARRAY X5R 2X1U K 6V3 MA 0405	2x1u	6.3 V
C22 21	Bot- tom	J	4	0405_GNM 23		CHIP ARRAY X5R 2X1U K 6V3 MA 0405	2x1u	6.3 V
C22 22	Bot- tom	H	3	0405_GNM 23		CHIP ARRAY X5R 2X1U K 6V3 MA 0405	2x1u	6.3 V
C22 23	Bot- tom	H	4	0405_GNM 23		CHIP ARRAY X5R 2X1U K 6V3 MA 0405	2x1u	6.3 V
C22 24	Bot- tom	H	4	0405_GNM 23		CHIP ARRAY X5R 2X1U K 6V3 MA 0405	2x1u	6.3 V

Table 5:

Item	Side	X	Y	Type	Name	Name	Value	
C22 25	Bot- tom	H	4	0405_GNM 23		CHIP ARRAY X5R 2X1U K 6V3 MA 0405	2x1u	6.3 V
C22 26	Bot- tom	I	2	0405_GNM 23		CHIP ARRAY X5R 2X1U K 6V3 MA 0405	2x1u	6.3 V
C22 27	Bot- tom	H	3	0405_GNM 23		CHIP ARRAY X5R 2X1U K 6V3 MA 0405	2x1u	6.3 V
C22 28	Bot- tom	K	4	0405_GNM 23		CHIP ARRAY X5R 2X1U K 6V3 MA 0405	2x1u	6.3 V
C22 30	Bot- tom	H	3	0405_GNM 23		CHIP ARRAY X5R 2X1U K 6V3 MA 0405	2x1u	6.3 V
C23 50	Bot- tom	H	4	0405_GNM 23		CHIP ARRAY X5R 2X1U K 6V3 MA 0405	2x1u	6.3 V
C23 51	Bot- tom	K	5	0405_GNM 23		CHIP ARRAY X5R 2X1U K 6V3 MA 0405	2x1u	6.3 V
C23 52	Bot- tom	H	2	0405_GNM 23		CHIP ARRAY X5R 2X1U K 6V3 MA 0405	2x1u	6.3 V

**Table 5:**

Item	Side	X	Y	Type	Name	Name	Value	
C23 60	Bot- tom	I	4	0402C	Chipcap X7R 10% 16V 0402		10n	16V
C23 61	Bot- tom	J	4	0402C	Chipcap X7R 10% 16V 0402		10n	16V
C23 62	Bot- tom	J	1	0402C	Chipcap X7R 10% 50V 0402		1n0	50V
C23 70	Bot- tom	E	7	0805C	CHIPCAP X5R 10U M 6V3 0805		10U	6V3
C23 71	Bot- tom	G	8	0805C	CHIPCAP X5R 10U M 6V3 0805		10U	6V3
C23 72	Bot- tom	G	7	0805C	CHIPCAP X5R 10U M 6V3 0805		10U	6V3
C24 00	Bot- tom	I	5	0405_GNM 23		CHIP ARRAY X5R 2X1U K 6V3 MA 0405	2x1u	6.3 V
C24 01	Bot- tom	I	5	0405_GNM 23		CHIP ARRAY X5R 2X1U K 6V3 MA 0405	2x1u	6.3 V
C24 02	Bot- tom	E	6	0405_GNM 23		CHIP ARRAY X5R 2X1U K 6V3 MA 0405	2x1u	6.3 V
C24 03	Bot- tom	E	6	0405_GNM 23		CHIP ARRAY X5R 2X1U K 6V3 MA 0405	2x1u	6.3 V
C24 04	Top	B	2	0402C	Chipcap 5% NP0		12p	50V

Table 5:

Item	Side	X	Y	Type	Name	Name	Value	
C24 11	Bot- tom	D	8	0402C	Chipcap 5% NP0		47p	50V
C24 12	Bot- tom	E	7	0603C	CHIPCAP X5R 1U K 6V3 0603		1u0	6.3 V
C24 13	Bot- tom	D	8	0805C	CHIPCAP X5R 4U7 K 25V 0805		4u7	25V
C24 15	Bot- tom	E	9	0402C	Chipcap X7R 10% 16V 0402		10n	16V
C24 19	Bot- tom	J	5	0402C	Chipcap X7R 10% 16V 0402		10n	16V
C26 00	Bot- tom	B	8	0805C	CHIPCAP X5R 10U M 6V3 0805		10U	6V3
C26 01	Bot- tom	C	8	0402C	Chipcap 5% NP0		27p	50V
C26 02	Bot- tom	C	8	0402C	CHIPCAP X5R 100N K 10V 0402		100n	10V
C26 03	Bot- tom	E	8	0402C	CHIPCAP X5R 100N K 10V 0402		100n	10V
C27 00	Bot- tom	L	1	0402C	CHIPCAP X5R 100N K 10V 0402		100n	10V
C28 00	Bot- tom	K	8	0603C	CHIPCAP X5R 1U K 6V3 0603		1u0	6.3 V
C28 02	Bot- tom	K	8	0402C	Chipcap X7R 10% 50V 0402		1n0	50V
C28 03	Bot- tom	G	7	0402C	Chipcap X7R 10% 50V 0402		1n0	50V

**Table 5:**

Item	Side	X	Y	Type	Name	Name	Value	
C2804	Bottom	G	7	0402C	Chipcap X7R 10% 50V 0402		1n0	50V
C2861	Bottom	G	8	0402C	Chipcap X7R 10% 16V 0402		10n	16V
C2862	Bottom	H	8	0402C	Chipcap X7R 10% 16V 0402		10n	16V
C2863	Bottom	G	8	0402C	Chipcap X7R 10% 16V 0402		10n	16V
C2864	Bottom	K	5	0402C	Chipcap X7R 10% 16V 0402		10n	16V
C2865	Bottom	H	7	0402C	Chipcap X7R 10% 16V 0402		10n	16V
C2866	Bottom	H	7	0402C	Chipcap X7R 10% 16V 0402		10n	16V
C2867	Bottom	H	8	0402C	Chipcap X7R 10% 16V 0402		10n	16V
C2868	Bottom	G	8	0402C	Chipcap X7R 10% 16V 0402		10n	16V
C2869	Bottom	G	8	0402C	Chipcap X7R 10% 16V 0402		10n	16V
C2900	Bottom	H	4	0402C	Chipcap 5% NP0		100p	50V
C2901	Bottom	H	7	0402C	Chipcap 5% NP0		100p	50V
C3000	Bottom	L	6	0402C	CHIPCAP X5R 100N K 10V 0402		100n	10V

Table 5:

Item	Side	X	Y	Type	Name	Name	Value	
C3001	Bottom	L	6	0402C	Chipcap X7R 10% 16V 0402		10n	16V
C3002	Bottom	L	6	0402C	CHIPCAP X5R 100N K 10V 0402		100n	10V
C3003	Bottom	M	6	0402C	CHIPCAP X5R 100N K 10V 0402		100n	10V
C3004	Bottom	M	6	0402C	Chipcap X7R 10% 16V 0402		10n	16V
C3005	Bottom	L	6	0402C	CHIPCAP X5R 100N K 10V 0402		100n	10V
C3010	Bottom	M	8	0402C	Chipcap X7R 10% 16V 0402		10n	16V
C3011	Bottom	M	6	0603C	CHIPCAP X5R 1U K 6V3 0603		1u0	6.3 V
C3012	Bottom	M	6	0402C	Chipcap X7R 10% 16V 0402		10n	16V
C3013	Bottom	M	6	0603C	CHIPCAP X5R 1U K 6V3 0603		1u0	6.3 V
C3170	Bottom	K	8	0402C	Chipcap 5% NP0		27p	50V
C3303	Bottom	G	6	0402C	Chipcap 5% NP0		27p	50V
C3304	Bottom	H	6	0402C	Chipcap X7R 10% 16V 0402		10n	16V
C6180	Top	O	4	0402C	CHIPCAP X5R 100N K 10V 0402		100n	10V

**Table 5:**

Item	Side	X	Y	Type	Name	Name	Value	
C61 81	Top	O	4	0402C	CHIPCAP X5R 100N K 10V 0402		100n	10V
C61 82	Bot- tom	J	3	0402C	CHIPCAP X5R 100N K 10V 0402		100n	10V
C61 83	Bot- tom	J	4	0402C	CHIPCAP X5R 100N K 10V 0402		100n	10V
C61 84	Top	O	4	0402C	CHIPCAP X5R 100N K 10V 0402		100n	10V
C61 85	Top	P	4	0402C	CHIPCAP X5R 100N K 10V 0402		100n	10V
C75 00	Bot- tom	F	2	0402C	CHIPCAP X5R 100N K 10V 0402		100n	10V
C75 02	Bot- tom	G	1	0402C	CHIPCAP NP0 180P J 25V 0402		180p	25V
C75 03	Bot- tom	G	2	0603C	CHIPCAP NP0 2N7 G 50V 0603		2n7	50V
C75 04	Bot- tom	F	2	0402C	CHIPCAP NP0 270P J 25V 0402		270p	25V
C75 06	Bot- tom	D	5	0402C	Chipcap 5% NP0		100p	50V
C75 08	Bot- tom	D	4	0603C	CHIPCAP NP0 2N2 J 16V 0603		2n2	16V
C75 09	Bot- tom	E	5	0603C	CHIPCAP NP0 1N0 J 50V 0603		1n0	50V
C75 10	Bot- tom	E	5	0402C	Chipcap 5% NP0		56p	50V



Table 5:

Item	Side	X	Y	Type	Name	Name	Value	
C75 12	Bot- tom	E	5	0402C	Chipcap X7R 10% 16V 0402		10n	16V
C75 13	Bot- tom	E	5	0402C	Chipcap 5% NP0		18p	50V
C75 16	Bot- tom	F	4	0402C	Chipcap 5% NP0		27p	50V
C75 18	Bot- tom	F	4	0402C	CHIPCAP X5R 100N K 10V 0402		100n	10V
C75 19	Bot- tom	F	3	0402C	Chipcap X7R 10% 16V 0402		10n	16V
C75 20	Bot- tom	F	4	0402C	Chipcap 5% NP0		10p	50V
C75 21	Bot- tom	F	3	0402C	CHIPCAP X5R 100N K 10V 0402		100n	10V
C75 22	Bot- tom	F	4	0402C	Chipcap X7R 10% 16V 0402		10n	16V
C75 24	Bot- tom	F	4	0402C	CHIPCAP X5R 100N K 10V 0402		100n	10V
C75 25	Bot- tom	F	4	0402C	Chipcap 5% NP0		100p	50V
C75 26	Bot- tom	F	5	0402C	CHIPCAP X5R 100N K 10V 0402		100n	10V
C75 27	Bot- tom	F	5	0402C	CHIPCAP X5R 100N K 10V 0402		100n	10V
C75 28	Bot- tom	G	4	0402C	Chipcap 5% NP0		82p	50V
C75 29	Bot- tom	F	4	0402C	Chipcap 5% NP0		47p	50V
C75 30	Bot- tom	F	4	0402C	Chipcap 5% NP0		47p	50V

**Table 5:**

Item	Side	X	Y	Type	Name	Name	Value	
C75 31	Bot- tom	D	2	0402C	Chipcap 5% NP0		18p	50V
C75 32	Bot- tom	C	4	0402C	Chipcap 5% NP0		27p	50V
C75 35	Bot- tom	E	3	0402C	CHIPCAP NP0 470P J 6V3 0402		470p	6V3
C75 36	Bot- tom	F	3	0402C	CHIPCAP NP0 470P J 6V3 0402		470p	6V3
C75 37	Bot- tom	F	3	0402C	CHIPCAP NP0 470P J 6V3 0402		470p	6V3
C75 38	Bot- tom	F	3	0402C	CHIPCAP NP0 470P J 6V3 0402		470p	6V3
C75 39	Bot- tom	F	2	0402C	Chipcap 5% NP0		10p	50V
C77 02	Bot- tom	B	4	0402C	Chipcap X7R 10% 50V 0402		1n0	50V
C77 04	Bot- tom	B	3	0402C	Chipcap +- 0.25pF NP0		1p0	50V
C77 05	Bot- tom	B	4	0805C	CHIPCAP X5R 4U7 K 6V3 0805		4u7	6V3
C77 06	Bot- tom	A	4	0402C	Chipcap 5% NP0		27p	50V
C77 07	Bot- tom	C	4	0402C	Chipcap 5% NP0		56p	50V
C77 08	Bot- tom	C	4	0402C	Chipcap 5% NP0		12p	50V
C77 11	Bot- tom	C	2	0402C	Chipcap X7R 10% 50V 0402		1n0	50V
C77 12	Bot- tom	C	4	0402C	Chipcap X7R 10% 16V 0402		10n	16V

Table 5:

Item	Side	X	Y	Type	Name	Name	Value	
C7713	Bottom	C	2	0402C	Chipcap 5% NP0		15p	50V
C7714	Bottom	D	2	0402C	Chipcap 5% NP0		15p	50V
C7716	Bottom	C	2	0402C	Chipcap X7R 10% 16V 0402		10n	16V
C7720	Bottom	D	4	0402C	Chipcap X7R 10% 16V 0402		10n	16V
C7800	Bottom	B	2	0402C	Chipcap 5% NP0		100p	50V
C7801	Bottom	B	2	0402C	Chipcap +/- 0.25pF NP0		3p3	50V
C7802	Bottom	B	2	0402C	CHIPCAP X5R 100N K 10V 0402		100n	10V
C7803	Bottom	B	2	0402C	Chipcap 5% NP0		15p	50V
C7804	Bottom	C	2	0402C	Chipcap +/- 0.25pF NP0		1p2	50V
C7805	Bottom	D	3	0402C	Chipcap 5% NP0		15p	50V
C7806	Bottom	D	3	0402C	Chipcap 5% NP0		15p	50V
D2200	Bottom	I	3	TFBGA_24 4		UEMEK2V0 LF WDENA TFBGA244	~	~
D2400	Bottom	E	6	USMD14_2 .433X2.11A BC_0.675			REG LM2795TL X-NOPB 2.4X2.0X0. 8MM	~
D2401	Bottom	I	5	USMD14_2 .433X2.11A BC_0.675			REG LM2795TL X-NOPB 2.4X2.0X0. 8MM	~

**Table 5:**

Item	Side	X	Y	Type	Name	Name	Value	
D2800	Bottom	I	7	uBGA_289	TIKUEDGE 1.1 F751728A C035 288UBGA		~	~
D3000	Bottom	K	7	FBGA44_H 1.0		NOR 128M+128 M 1.8/1.8V FBGA44 PBFREE	8Mx16	~
D3001	Bottom	M	7	WBGA_60_ 8.1X6.6		SDRAM 4X16 1.8V/ 1.8V FBGA60 PBFREE	4Mx16	~
F2000	Bottom	N	3	0402_FUS E_H0.5		SM FUSE FF 1.5A 32V 0402	1.5A	~
G7500	Bottom	F	2	VCO_DCS 02733		VCO 3296- 3980MHZ 4-BAND MATSUSH- ITA	3296- 3980MHz	~
G7501	Bottom	F	5	NGK3138C		VCTCXO 26MHZ +- 3PPM 2.7v 1.3MA GSM	26MHz	~
L2000	Bottom	N	3	0805_BLM 21		FERR.BEA D 0R03 42R/ 100MHZ 3A 0805	42R/ 100MHz	~
L2001	Bottom	M	4	0603_BLM	FERRITE BEAD 0R5 600R/ 100MHZ 0603		600R/ 100MHz	~

Table 5:

Item	Side	X	Y	Type	Name	Name	Value	
L200 2	Bot- tom	M	5	0603_BLM	FERRITE BEAD 0R5 600R/ 100MHZ 0603		600R/ 100MHz	~
L200 3	Bot- tom	M	4	FERRITE_ 0402		FERRITE BEAD 0.6R 600R/ 100MHZ 0402	600R/ 100MHz	~
L210 0	Bot- tom	L	4	FERRITE_ 0402		FERRITE BEAD 0.6R 600R/ 100MHZ 0402	600R/ 100MHz	~
L210 1	Bot- tom	M	3	0405_2_H1 .0		CHIP BEAD ARRAY 2X1000R 0405	2x1000R/ 100MHz	~
L210 2	Bot- tom	M	4	0405_2_H1 .0		CHIP BEAD ARRAY 2X1000R 0405	2x1000R/ 100MHz	~
L210 3	Bot- tom	M	5	0405_2_H1 .0		CHIP BEAD ARRAY 2X1000R 0405	2x1000R/ 100MHz	~
L210 4	Bot- tom	H	5	FERRITE_ 0402		FERRITE BEAD 0.6R 600R/ 100MHZ 0402	600R/ 100MHz	~
L210 5	Bot- tom	I	5	FERRITE_ 0402		FERRITE BEAD 0.6R 600R/ 100MHZ 0402	600R/ 100MHz	~

**Table 5:**

Item	Side	X	Y	Type	Name	Name	Value	
L2200	Bottom	J	4	FERRITE_BK1608		FERRITE BEAD 0R3 47/100MHZ 0603	47R/100MHz	~
L2350	Bottom	H	4	0603_BLM	FERRITE BEAD 0R5 600R/100MHZ 0603		600R/100MHz	~
L2351	Bottom	J	5	0603_BLM	FERRITE BEAD 0R5 600R/100MHZ 0603		600R/100MHz	~
L2352	Bottom	H	2	0603_BLM	FERRITE BEAD 0R5 600R/100MHZ 0603		600R/100MHz	~
L2353	Bottom	H	5	0603_BLM	FERRITE BEAD 0R5 600R/100MHZ 0603		600R/100MHz	~
L2354	Bottom	H	3	0603_BLM	FERRITE BEAD 0R5 600R/100MHZ 0603		600R/100MHz	~
L2355	Bottom	J	5	0603_BLM	FERRITE BEAD 0R5 600R/100MHZ 0603		600R/100MHz	~
L2370	Bottom	F	7	CHOKE_D 412F		CHOKE 10U 0R33 0.77A 4.6X4.6X1.2	10uH	~

Table 5:

Item	Side	X	Y	Type	Name	Name	Value	
L2400	Bottom	D	6	CHOKE_D 3312FB_H1 .4			CHOKE 22U M0.33A 1R5 3.3X3.3X1. 3	22u H
L2401	Bottom	J	5	0603_BLM	FERRITE BEAD 0R5 600R/ 100MHZ 0603		600R/ 100MHz	~
L3170	Bottom	L	8	FERRITE_ 0402		FERRITE BEAD 0.6R 600R/ 100MHZ 0402	600R/ 100MHz	~
L7500	Bottom	E	4	0402_ELJR F		CHIP COIL 5N6+-0N3 Q7/100M 0402	5n6H	~
L7501	Bottom	E	4	0402_ELJR F		CHIP COIL 5N6+-0N3 Q7/100M 0402	5n6H	~
L7502	Bottom	E	4	0402L	CHIP COIL 3N3 +-0N3 Q28/800M 0402		3n3H	~
L7503	Bottom	E	4	0402L	CHIP COIL 3N3 +-0N3 Q28/800M 0402		3n3H	~
L7700	Bottom	B	4	0805_BLM 21		FERR.BEA D 0R03 42R/ 100MHZ 3A 0805	42R/ 100MHz	~
L7800	Bottom	B	2	0402L	CHIP COIL 3N3 +-0N3 Q28/800M 0402		3n3H	~

**Table 5:**

Item	Side	X	Y	Type	Name	Name	Value	
L780 1	Bot- tom	C	2	0402L	CHIP COIL 3N3 +-0N3 Q28/800M 0402		3n3H	~
L780 2	Bot- tom	E	2	0402L	CHIP COIL 4N7 +-0N3 Q28/800M 0402		4n7H	~
L780 3	Bot- tom	D	2	0402L	CHIP COIL 4N7 +-0N3 Q28/800M 0402		4n7H	~
L780 4	Bot- tom	E	2	0402L	CHIP COIL 15N J Q30/ 800M 0402		15nH	~
L780 5	Bot- tom	E	2	0402L	CHIP COIL 15N J Q30/ 800M 0402		15nH	~
L780 7	Bot- tom	E	3	0402L	CHIP COIL 8N2 J Q28/ 800MHZ 0402		8n2H	~
N20 00	Bot- tom	K	5	BCC_16	NUT/ CP2137 ASIC HBCC16++		~	~
N20 80	Bot- tom	D	5	USMD10_2 .08X1.57_H 0.675			CURRENT SENS LM3820 USMD10 PB-FREE	~
N21 00	Bot- tom	H	5	USMD9_1. 544X1.544 _0.675			AF AMP 0.4W LM4890/ NCP2890 PBFREE	~



Table 5:

Item	Side	X	Y	Type	Name	Name	Value	
N2370	Bottom	E	7	USMD_10_2.458X1.899			DC-DC CONV LM2708HT LX-1.57V/ 1.35V USMD10	~
N2400	Bottom	D	7	SOT23L_8	DC/DC CONV 350MA TK11851 SOP8		~	~
N2401	Top	B	2	SH248CSP		HALL IC SWITCH SH248CSP VCC	~	~
N2600	Bottom	D	8	IRDA_CIM_50M5_T		IRDA CIM-50M5A **RESERVED**	~	~
N7500	Bottom	E	3	TFBGA88	HELGO86 G LB		~	~
N7700	Bottom	C	3	RF_PA_PF 79001B_6. 2X5.2A			PW AMP RF9250E4. 1 MICRO GSM/ EDGE	~
R2000	Top	O	4	0402_NTH 5		NTC RES 47K J B=4050+- 3% 0402	47k	~
R2001	Bottom	M	4	0402R	Resistor 5% 63mW		100k	~
R2004	Bottom	M	5	0402R	Resistor 5% 63mW		220k	~
R2005	Bottom	L	5	0402R	Resistor 5% 63mW		220k	~
R2006	Bottom	M	5	0402_VAR	CHIP VARISTOR VWM14V VC50V 0402		14V/50V	~

**Table 5:**

Item	Side	X	Y	Type	Name	Name	Value	
R2009	Bottom	L	5	uBGA_10_1.7X2.05		ASIP USB2 FILTER BGA10**PB FREE**	~	~
R2010	Bottom	M	5	0402R	Resistor 5% 63mW		33R	~
R2015	Bottom	C	6	0402_VAR	CHIP VARISTOR VWM14V VC50V 0402		14V/50V	~
R2081	Bottom	C	5	0402R	Resistor 5% 63mW		2k2	~
R2082	Bottom	C	5	0402R	Resistor 5% 63mW		2k2	~
R2100	Bottom	L	3	MNR02_SR		RES NETWORK 0W06 2X2K2 J 0404	2x2k2	~
R2101	Bottom	M	3	MNR02_SR		RES NETWORK 0W06 2X10R J 0404	2x10R	~
R2102	Bottom	M	4	MNR02_SR		RES NETWORK 0W06 2X10R J 0404	2x10R	~
R2104	Bottom	L	3	0402R	Resistor 5% 63mW		2k2	~
R2105	Bottom	K	1	0402R	Resistor 5% 63mW		100R	~
R2106	Bottom	K	1	0402R	Resistor 5% 63mW		10k	~
R2107	Bottom	K	1	uBGA11_2.15X1.65		ASIP MIC W/ESD RES+CAP+ ZDI BGA11	~	~

Table 5:

Item	Side	X	Y	Type	Name	Name	Value	
R2109	Bottom	M	4	0402_VAR	CHIP VARISTOR VWM14V VC50V 0402		14V/50V	~
R2110	Bottom	M	4	0402_VAR	CHIP VARISTOR VWM14V VC50V 0402		14V/50V	~
R2111	Bottom	M	5	0402_VAR	CHIP VARISTOR VWM14V VC50V 0402		14V/50V	~
R2112	Bottom	M	5	0402_VAR	CHIP VARISTOR VWM14V VC50V 0402		14V/50V	~
R2113	Bottom	L	3	0402R	Resistor 5% 63mW		100R	~
R2115	Bottom	H	5	0402R	Resistor 5% 63mW		8k2	~
R2116	Bottom	H	5	0402R	Resistor 5% 63mW		8k2	~
R2117	Bottom	H	5	0402R	Resistor 5% 63mW		100k	~
R2119	Bottom	H	5	0402R	Resistor 5% 63mW		22k	~
R2120	Bottom	H	5	0402R	Resistor 5% 63mW		22k	~
R2137	Bottom	K	5	0402R	Chipres 0W06 jumper 0402		0R	~
R2138	Bottom	L	4	0402R	Chipres 0W06 jumper 0402		0R	~

**Table 5:**

Item	Side	X	Y	Type	Name	Name	Value	
R2200	Bottom	I	1	0805R_THERM1		CHIPRES 0W250R22 J 0805	0R22	~
R2360	Bottom	J	5	0402R	Resistor 5% 63mW		100k	~
R2361	Bottom	I	4	0402R	Resistor 5% 63mW		100k	~
R2362	Bottom	J	4	0402R	Resistor 5% 63mW		4k7	~
R2363	Bottom	J	5	0402R	Resistor 5% 63mW		4k7	~
R2400	Bottom	E	7	0402R	Resistor 5% 63mW		150R	~
R2401	Bottom	I	5	0402R	Resistor 5% 63mW		270R	~
R2402	Top	B	2	0402R	Resistor 5% 63mW		100k	~
R2403	Bottom	D	8	0402R	Resistor 5% 63mW		33R	~
R2404	Bottom	H	8	0402R	Resistor 5% 63mW		47R	~
R2405	Bottom	G	8	0402R	Resistor 5% 63mW		47R	~
R2406	Top	C	6	0402R	Resistor 5% 63mW		100R	~
R2407	Bottom	E	8	0402R	Resistor 5% 63mW		10k	~
R2409	Top	F	6	0402R	Resistor 5% 63mW		100R	~
R2413	Top	N	6	0402R	Resistor 5% 63mW		100R	~
R2414	Top	K	6	0402R	Resistor 5% 63mW		100R	~
R2440	Top	K	3	0402R	Resistor 5% 63mW		100R	~

Table 5:

Item	Side	X	Y	Type	Name	Name	Value	
R24 41	Top	N	3	0402R	Resistor 5% 63mW		100R	~
R24 42	Top	F	3	0402R	Resistor 5% 63mW		100R	~
R24 43	Top	C	3	0402R	Resistor 5% 63mW		100R	~
R24 45	Bot- tom	E	8	0402_VAR	CHIP VARISTOR VWM14V VC50V 0402		14V/50V	~
R24 49	Bot- tom	B	8	0402R	Resistor 5% 63mW		100R	~
R24 50	Bot- tom	B	8	0402_VAR	CHIP VARISTOR VWM14V VC50V 0402		14V/50V	~
R26 00	Bot- tom	C	8	0805R_TH ERM1		CHIPRES 0W125 4R7 J 0805	4R7	~
R27 00	Bot- tom	L	1	uBGA8	ASIP EMIF03- SIM01F2 **PB- FREE**		~	~
R27 01	Bot- tom	L	1	0402R	Resistor 5% 63mW		10k	~
R28 00	Bot- tom	K	6	0402R	Resistor 5% 63mW		47R	~
R28 01	Bot- tom	K	6	0402R	Resistor 5% 63mW		10k	~
R28 02	Bot- tom	K	8	0402R	Resistor 5% 63mW		10R	~
R28 03	Bot- tom	G	7	0402R	Resistor 5% 63mW		10R	~

**Table 5:**

Item	Side	X	Y	Type	Name	Name	Value	
R2804	Bottom	K	5	0402R	Chipres 0W06 jumper 0402		0R	~
R2900	Bottom	I	4	0402R	Resistor 5% 63mW		10k	~
R2901	Bottom	G	7	0402R	Resistor 5% 63mW		100R	~
R2902	Bottom	H	4	0402R	CHIPRES 0W06 27K F 0402		27k	~
R3000	Bottom	L	6	0402R	Resistor 5% 63mW		4k7	~
R3010	Bottom	L	8	0402R	Resistor 5% 63mW		47R	~
R3300	Bottom	G	6	0402R	Resistor 5% 63mW		4k7	~
R3301	Bottom	G	6	0402R	Resistor 5% 63mW		4k7	~
R3303	Bottom	K	6	0402R	Chipres 0W06 100R F 200ppm 0402		100R	~
R3304	Bottom	K	6	0402R	Chipres 0W06 100R F 200ppm 0402		100R	~
R3305	Bottom	J	6	0402R	Resistor 5% 63mW		15k	~
R3400	Bottom	M	2	0402R	Resistor 5% 63mW		22R	~
R3403	Bottom	M	2	0402R	Resistor 5% 63mW		22R	~
R3405	Bottom	M	2	0402R	Resistor 5% 63mW		22R	~
R3701	Bottom	L	6	0402R	Resistor 5% 63mW		100k	~

Table 5:

Item	Side	X	Y	Type	Name	Name	Value	
R7500	Bottom	F	2	0402R	Chipres 0W06 5R6 J 0402		5R6	~
R7501	Bottom	G	2	0402R	Resistor 5% 63mW		5k6	~
R7502	Bottom	G	2	0402R	Chipres 0W06 6k8 F 0402		6k8	~
R7503	Bottom	G	3	0404_RAC 10		RES NET- WORK 0W04 2DB ATT 0404	436R/11R6/ 436R	~
R7504	Bottom	D	5	0402R	Resistor 5% 63mW		4k7	~
R7505	Bottom	D	4	0402R	Resistor 5% 63mW		4k7	~
R7506	Bottom	E	4	0402R	Resistor 5% 63mW		22k	~
R7508	Bottom	D	5	0402R	Resistor 5% 63mW		10k	~
R7509	Bottom	D	4	0402R	Resistor 5% 63mW		100R	~
R7510	Bottom	D	5	0402R	Resistor 5% 63mW		100R	~
R7511	Bottom	G	3	0402R	Resistor 5% 63mW		4k7	~
R7512	Bottom	F	3	0402R	CHIPRES 0W06 5K6 F 0402		5k6	~
R7513	Bottom	F	5	0402R	Resistor 5% 63mW		15k	~
R7514	Bottom	G	4	0402R	Resistor 5% 63mW		15k	~
R7515	Bottom	F	4	0404_R	RES NET- WORK 0W06 2X5K6 J 0404		2x5k6	~

**Table 5:**

Item	Side	X	Y	Type	Name	Name	Value	
R7516	Bottom	F	4	0404_R	RES NETWORK 0W06 2X5K6 J 0404		2x5k6	~
R7701	Bottom	B	4	0402R	Resistor 5% 63mW		1k0	~
R7702	Bottom	B	4	0402R	Resistor 5% 63mW		4k7	~
R7705	Bottom	C	4	0404_RAC 10		RES NETWORK 0W04 1DB ATT 0404	870R/5R77/ 870R	~
R7707	Bottom	C	2	0402R	Resistor 5% 63mW		10R	~
R7708	Bottom	C	3	0402R	Chipres 0W06 5R6 J 0402		5R6	~
R7713	Bottom	C	4	0402R	Resistor 5% 63mW		33R	~
R7715	Bottom	C	2	0402R	Resistor 5% 63mW		33R	~
R7717	Bottom	C	3	0402R	Resistor 5% 63mW		820R	~
R7718	Bottom	C	3	0402R	Resistor 5% 63mW		820R	~
R7719	Bottom	B	2	0402R	Chipres 0W06 jumper 0402		0R	~
R7800	Bottom	B	2	0402R	Resistor 5% 63mW		3k3	~
R7801	Bottom	B	2	0402R	Resistor 5% 63mW		10R	~
R7802	Bottom	C	2	0402R	Resistor 5% 63mW		270R	~



Table 5:

Item	Side	X	Y	Type	Name	Name	Value	
S2400	Bottom	B	8	SWITCH_E VQ5P701K			SM SW TACT SPST 12V SIDE KEY 3N	~
S2401	Bottom	E	8	SWITCH_E VQ5P701K			SM SW TACT SPST 12V SIDE KEY 3N	~
S2405	Bottom	B	1	SWITCH_E VQ5P701K			SM SW TACT SPST 12V SIDE KEY 3N	~
S2406	Bottom	E	1	SWITCH_E VQ5P701K			SM SW TACT SPST 12V SIDE KEY 3N	~
T7500	Bottom	G	3	TRANS_LD B213		TRANSF BALUN 3600MHZ+- 400MHZ	~	~
T7700	Bottom	C	3	TRANS_LD B15		TRANSF BALUN 1800+- 100mhz 2x1.25	~	~
T7800	Bottom	C	2	TRANS_LD B15		TRANSF BALUN 1.9GHZ+- 100MHZ 2X1.25	~	~
V2000	Bottom	N	2	DIODE_SM F16A		TVS DIODE 16V 175W FLAT-LEAD SMD	~	~

**Table 5:**

Item	Side	X	Y	Type	Name	Name	Value	
V2400	Top	N	3	LED_LWV18G		LED WHITE 90-345MCD 10MA 90DEG	~	~
V2401	Top	F	6	LED_LWV18G		LED WHITE 90-345MCD 10MA 90DEG	~	~
V2402	Top	F	3	LED_LWV18G		LED WHITE 90-345MCD 10MA 90DEG	~	~
V2403	Top	N	6	LED_LWV18G		LED WHITE 90-345MCD 10MA 90DEG	~	~
V2404	Bottom	E	7	SC79	SCH DI 1PS79SB3 1 200MA 30V SOD523		~	~
V2405	Top	D	6	LED_LWV18G		LED WHITE 90-345MCD 10MA 90DEG	~	~
V2406	Top	D	3	LED_LWV18G		LED WHITE 90-345MCD 10MA 90DEG	~	~
V2407	Top	J	6	LED_LWV18G		LED WHITE 90-345MCD 10MA 90DEG	~	~

Table 5:

Item	Side	X	Y	Type	Name	Name	Value	
V2416	Bottom	I	5	VMT3_R	TR DTC143ZMN RB=4K7 RBE=47K VMT3		~	~
V2424	Top	J	3	LED_LWV18G		LED WHITE 90-345MCD 10MA 90DEG	~	~
V7800	Bottom	B	2	SOT_363	TR BGA428 LNA1.8GH Z 19.5DB SOT363		~	~
X2000	Bottom	B	7	LYNX_BATT_CONN_H7.4			SM LYNX BATT.CON N 3POL HEIGHT 7.3	~
X2003	Bottom	O	5	SYSCON_MQ202_NK_14R3			SM SYS- TEM CON- NECTOR 14POL	~
X2400	Top	B	6	CON_DF30FC_40DS_0.4V			SM B2B 2X20 P0.4 F 30V 0.3A DF30FC- 40DS-0.4V	~
X2700	Bottom	K	2	SIM_CONN_47019150_1			SM SIM CONN 6POL P2.54 H1.5	~
X3499	Top	C	8	TRACEABILITY_PAD		MODULE ID COM- PONENT 2.8X1.8X0.3	~	~
X7800	Bottom	A	6	CONN_RF_WFL_R_SMT			CONN RF 50 OHMS SMT (PWB/ WIRE)	~

**Table 5:**

Item	Side	X	Y	Type	Name	Name	Value	
Z2400	Top	O	8	uBGA25_2.69X2.69		ASIP 10-CH ESD EMI FILTER BGA25	~	~
Z2401	Top	N	9	FC6_1.65X1.15		ASIP 2-CH MIC EMI/ESD **PB-FREE**	~	~
Z7700	Bottom	C	4	FILTER_T2 B_H0.78		SAW FILT 897.5+-17.5MHZ 2.0X1.6	836.5MHz	~
Z7800	Bottom	A	3	ANT_SW_5.6X4.2		DIPL+3SW 824-960/1710-1990MHZ 5.4X4	824-960/1710-1990MHz	~
Z7801	Bottom	A	2	FILTER_T2 UB_H0.78		SAW FILT 1960+-30MHZ 2.0X1.6	1960MHz	~
Z7802	Bottom	D	2	FILTER_T2 B_H0.78		SAW 1842.5+-37.5MHZ 2.0X1.6	1842.5MHz	~
Z7803	Bottom	E	2	FILTER_T2 B_H0.78		SAW 942.5+-17.5MHZ 2.0X1.6	881.5MHz	~

## Upper block for RM-8/RM-47 (1DS)

Item	Side	X	Y	Type	Name	Value	
A3600	Bottom	L	3	SHIELD_DMD12177	LCD SHIELD DMD12177	~	~
C3600	Top	N	7	0402C	Chipcap 5% NP0	27p	50V
C3601	Top	N	7	0402C	Chipcap 5% NP0	27p	50V
C3602	Bottom	O	4	0402C	Chipcap 5% NP0	27p	50V
C3603	Bottom	N	4	0402C	Chipcap 5% NP0	27p	50V
C3604	Bottom	B	8	0603C	CHIPCAP X5R 1U K 16V 0603	1u0	16V
C3605	Bottom	B	8	0402C	CHIPCAP X5R 100N K 10V 0402	100n	10V
C3606	Bottom	B	8	0402C	CHIPCAP X5R 100N K 10V 0402	100n	10V
C3607	Bottom	K	7	0402C	Chipcap 5% NP0	27p	50V
C3608	Bottom	K	7	0402C	Chipcap 5% NP0	27p	50V
C3609	Top	O	1	0402C	CHIPCAP X5R 0U47 K 6.3V 0402	0u47	6V3
C3610	Top	N	1	0402C	Chipcap 5% NP0	27p	50V
C3611	Bottom	N	4	0402C	CHIPCAP X5R 100N K 10V 0402	100n	10V
C3612	Bottom	N	4	0402C	Chipcap 5% NP0	27p	50V
C3615	Bottom	A	7	0402C	Chipcap 5% NP0	27p	50V
C3616	Top	B	7	0402C	Chipcap 5% NP0	27p	50V
C3617	Bottom	O	4	0402C	Chipcap 5% NP0	27p	50V

Item	Side	X	Y	Type	Name	Value	
C3620	Bottom	N	4	0402C	CHIPCAP X5R 100NK 10V 0402	100n	10V
C3624	Top	O	1	0402C	CHIPCAP X5R 0U47K 6.3V 0402	0u47	6V3
C3625	Top	N	1	0402C	CHIPCAP X5R 0U47K 6.3V 0402	0u47	6V3
C3626	Top	B	7	0402C	Chipcap 5% NP0	27p	50V
G3600	Bottom	O	1	BATTER_RB414H	CELL CAPACITOR 0.01MAH 3V3	3V3	~
L3601	Top	O	7	COIL_0603CS	CHIP COIL 33N G Q40/250MHZ 0603	33nH	~
L3602	Top	O	8	COIL_0603CS	CHIP COIL 33N G Q40/250MHZ 0603	33nH	~
L3603	Bottom	A	7	0402L	CHIP COIL 5N6 +-0N3 Q28/800M 0402	5n6H	~
L3604	Bottom	N	4	FERRITE_0402	FERRITE BEAD 0.6R 600R/100MHZ 0402	600R / 100M Hz	~
L3606	Bottom	O	5	0405_2_H1.0	CHIP BEAD ARRAY 2X1000R 0405	2x1000R / 100M Hz	~
L3608	Top	B	7	0402L	CHIP COIL 4N7 +-0N3 Q28/800M 0402	4n7H	~
L3609	Bottom	C	7	FERRITE_0402		FERRITE BEAD 0.6R 600R / 100MHZ 0402	600R / 100M Hz
R3600	Top	N	7	0402_VAR	CHIP VARISTOR VWM14V VC50V 0402	14V/50V	~

Item	Side	X	Y	Type	Name	Value	
R3601	Top	N	7	0402_VAR	CHIP VARISTOR VWM14V VC50V 0402	14V/ 50V	~
R3602	Bottom	O	4	0402_VAR	CHIP VARISTOR VWM14V VC50V 0402	14V/ 50V	~
R3603	Bottom	N	5	0402_VAR	CHIP VARISTOR VWM14V VC50V 0402	14V/ 50V	~
R3604	Bottom	B	8	0402R	Chipres 0W06 jumper 0402	0R	~
R3605	Bottom	C	7	0402R	Chipres 0W06 jumper 0402	0R	~
R3606	Top	B	7	0402R	Chipres 0W06 jumper 0402	0R	~
R3607	Bottom	K	7	0402R	Resistor 5% 63mW	220k	~
V3600	Bottom	D	3	LED_CL_430S_ WA_D_T	LED WFC 20MA 2.8X1X1	~	~
V3601	Bottom	D	4	LED_CL_430S_ WA_D_T	LED WFC 20MA 2.8X1X1	~	~
V3602	Bottom	D	6	LED_CL_430S_ WA_D_T	LED WFC 20MA 2.8X1X1	~	~
X3600	Bottom	L	7	MOLEX_54722_ 0243	CONN BTB 0.5P 8.6X6MM	~	~
X3601	Bottom	B	7	CON_DF23C_10 DS	SM CONN BTB 2X5 F P0.5	~	~
X3602	Top	A	3	CON_DF30FC_4 0DS_0.4V	SM B2B 2X20 P0.4 F 30V 0.3A DF30FC- 40DS-0.4V	~	~
X3603	Top	N	3	CAMERA_CON N_SMIA	SM CONN 2X7 P1.1 SMIA CAMERA THRU BOARD	~	~
X3606	Top	B	6	CONN_RF_WFL _R_SMT	CONN RF 50 OHMS SMT (PWB/WIRE)	~	~

Note: R3605 will change to L3609, when PWB Upper Assy HWID1604 will change to HWID1606

## Upper block for RM-48 (1NM)

**Table 6:**

Item	Side	X	Y	Type	Name		Value	
A3600	Bottom	L	3	SHIELD_D MD12177		LCD SHIELD DMD12177	~	~
C3600	Top	N	7	0402C	Chipcap 5% NP0		27p	50 V
C3601	Top	N	7	0402C	Chipcap 5% NP0		27p	50 V
C3602	Bottom	O	4	0402C	Chipcap 5% NP0		27p	50 V
C3603	Bottom	N	4	0402C	Chipcap 5% NP0		27p	50 V
C3605	Bottom	B	8	0402C	CHIPCAP X5R 100N K 10V 0402		100n	10 V
C3606	Bottom	B	8	0402C	CHIPCAP X5R 100N K 10V 0402		100n	10 V
C3607	Bottom	K	7	0402C	Chipcap 5% NP0		27p	50 V
C3608	Bottom	K	7	0402C	Chipcap 5% NP0		27p	50 V
C3609	Top	O	1	0402C	CHIPCAP X5R 0U47 K 6.3V 0402		0u47	6V 3
C3610	Top	N	1	0402C	Chipcap 5% NP0		27p	50 V
C3611	Bottom	N	4	0402C	CHIPCAP X5R 100N K 10V 0402		100n	10 V
C3612	Bottom	N	4	0402C	Chipcap 5% NP0		27p	50 V
C3614	Top	B	8	0402C	Chipcap 5% NP0		27p	50 V
C3615	Bottom	A	7	0402C	Chipcap 5% NP0		27p	50 V



Table 6:

Item	Side	X	Y	Type	Name		Value	
C3616	Top	B	7	0402C	Chipcap 5% NP0		27p	50V
C3617	Bottom	O	4	0402C	Chipcap 5% NP0		27p	50V
C3620	Bottom	N	4	0402C	CHIPCAP X5R 100N K 10V 0402		100n	10V
C3624	Top	O	1	0402C	CHIPCAP X5R 0U47 K 6.3V 0402		0u47	6V3
C3625	Top	N	1	0402C	CHIPCAP X5R 0U47 K 6.3V 0402		0u47	6V3
C3626	Top	B	7	0402C	Chipcap 5% NP0		27p	50V
G3600	Bottom	O	1	BATTER_R B414H		CELL CAPACITOR 0.01MAH 3V3	3V3	~
L3601	Top	O	7	COIL_0603 CS		CHIP COIL 33N G Q40/ 250MHZ 0603	33nH	~
L3602	Top	O	8	COIL_0603 CS		CHIP COIL 33N G Q40/ 250MHZ 0603	33nH	~
L3603	Bottom	A	7	0402L	CHIP COIL 5N6 +-0N3 Q28/800M 0402		5n6H	~
L3604	Bottom	N	4	FERRITE_0402		FERRITE BEAD 0.6R 600R/ 100MHZ 0402	600R / 100M Hz	~
L3606	Bottom	O	5	0405_2_H1 .0		CHIP BEAD ARRAY 2X1000R 0405	2x1000R/ 100M Hz	~
L3608	Top	B	7	0402L	CHIP COIL 5N6 +-0N3 Q28/800M 0402		5n6H	~

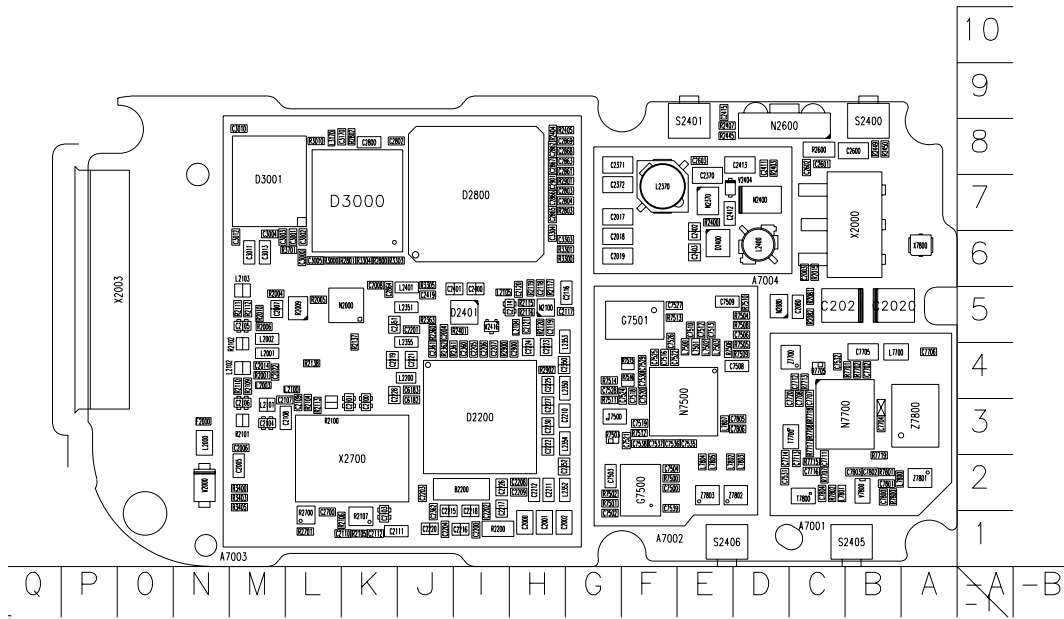
**Table 6:**

Item	Side	X	Y	Type	Name		Value	
L3609	Bottom	C	7	FERRITE_0402		FERRITE BEAD 0.6R 600R/100MHZ 0402	600R / 100M Hz	~
L3610	Top	B	7	0402L	CHIP COIL 12N J Q31/800M 0402		12nH	~
L3611	Bottom	B	8	0402L	CHIP COIL 12N J Q31/800M 0402		12nH	~
R3600	Top	N	7	0402_VAR	CHIP VARISTOR VWM14V VC50V 0402		14V/50V	~
R3601	Top	N	7	0402_VAR	CHIP VARISTOR VWM14V VC50V 0402		14V/50V	~
R3602	Bottom	O	4	0402_VAR	CHIP VARISTOR VWM14V VC50V 0402		14V/50V	~
R3603	Bottom	N	5	0402_VAR	CHIP VARISTOR VWM14V VC50V 0402		14V/50V	~
R3607	Bottom	K	7	0402R	Resistor 5% 63mW		220k	~
V3600	Bottom	D	3	LED_CL_430S_WA_D_T			LED WFC 20M A 2.8X 1X1	~
V3601	Bottom	D	4	LED_CL_430S_WA_D_T			LED WFC 20M A 2.8X 1X1	~
V3602	Bottom	D	6	LED_CL_430S_WA_D_T			LED WFC 20M A 2.8X 1X1	~

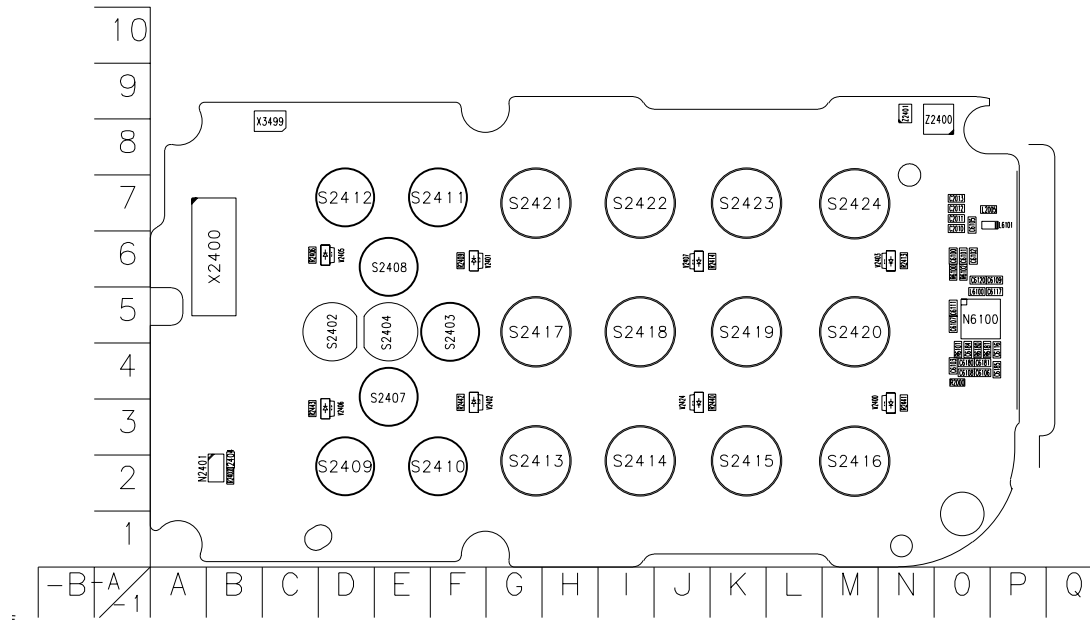
Table 6:

Item	Side	X	Y	Type	Name		Value	
X3600	Bottom	L	7	MOLEX_54722_0243		CONN BTB 0.5P 8.6X6MM	~	~
X3601	Bottom	B	7	CON_DF23C_10DS		SM CONN BTB 2X5 F P0.5	~	~
X3602	Top	A	3	CON_DF30FC_40DS_0.4V			SM B2B 2X20 P0.4 F 30V 0.3A DF30 FC-40DS -0.4V	~
X3603	Top	N	3	CAMERA_CONN_SMI A			SM CONN 2X7 P1.1 SMIA CAMERA THROUGH BOARD	~
X3606	Top	B	6	CONN_RF_WFL_R_SMT			CONN RF 50 OHMS SMT (PWB/WIRE)	~

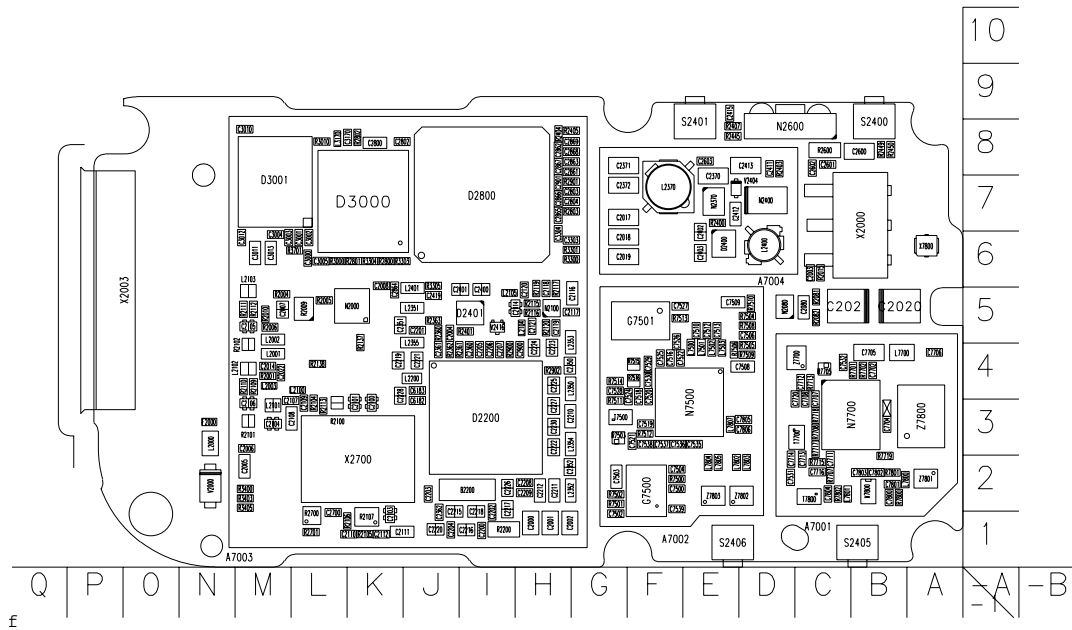
# RM-8 assembly values diagram, bottom



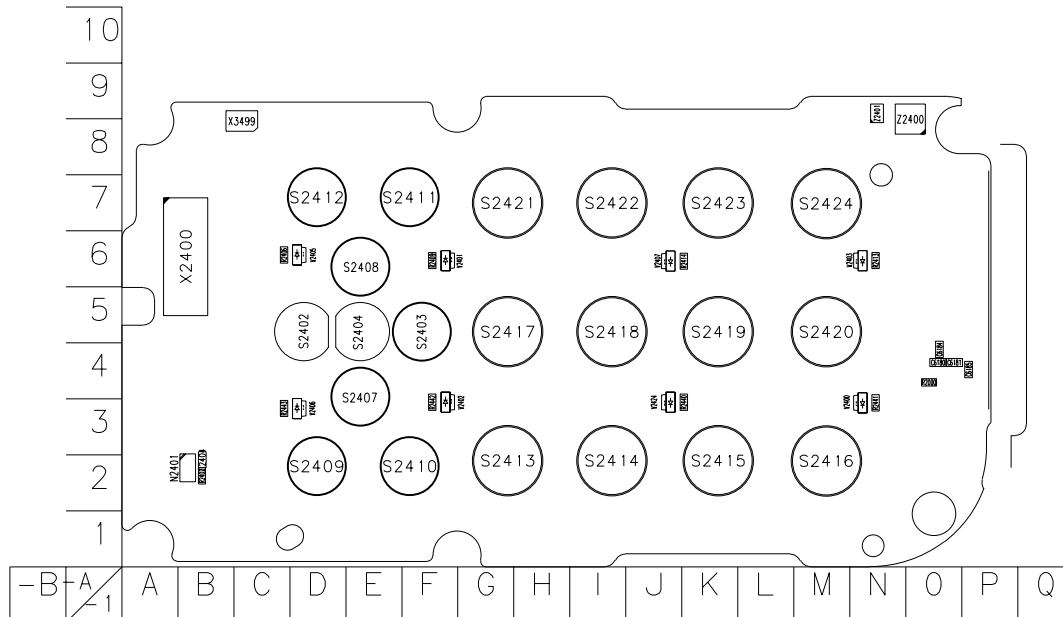
## RM-8 assembly values diagram, top



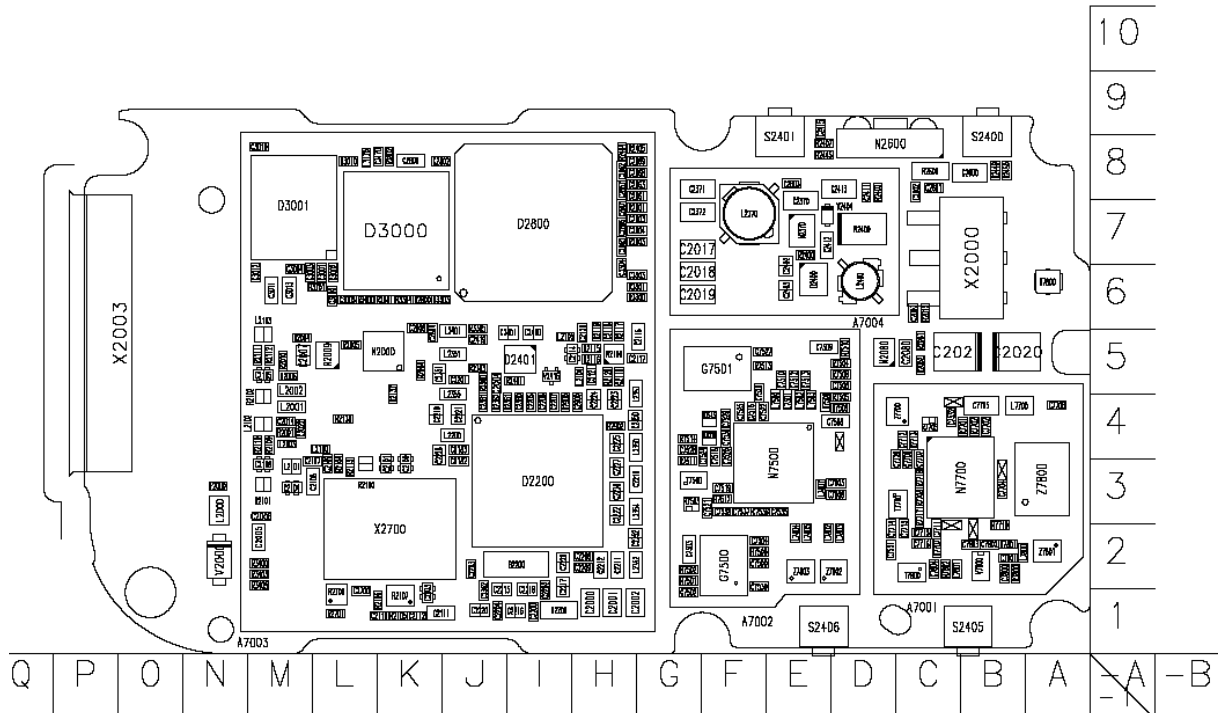
**RM-47 assembly values diagram, bottom**



**RM-47 assembly values diagram, top**

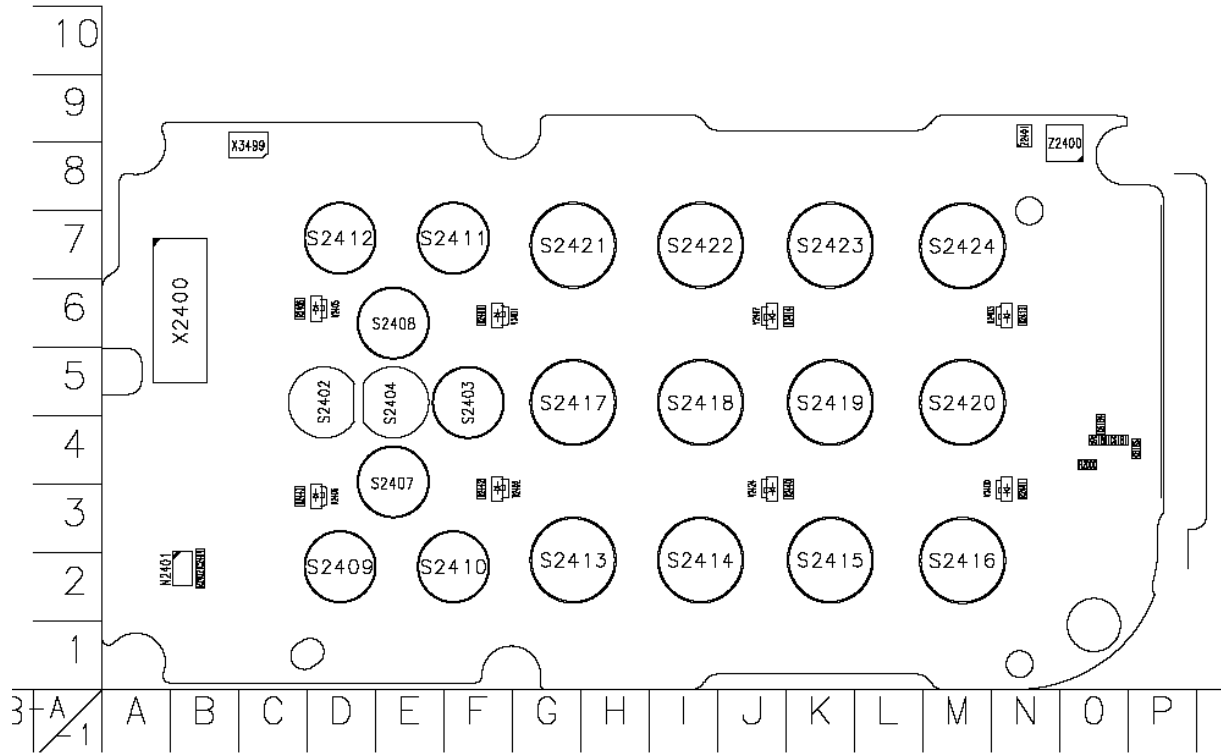


**RM-48 assembly values diagram, bottom**

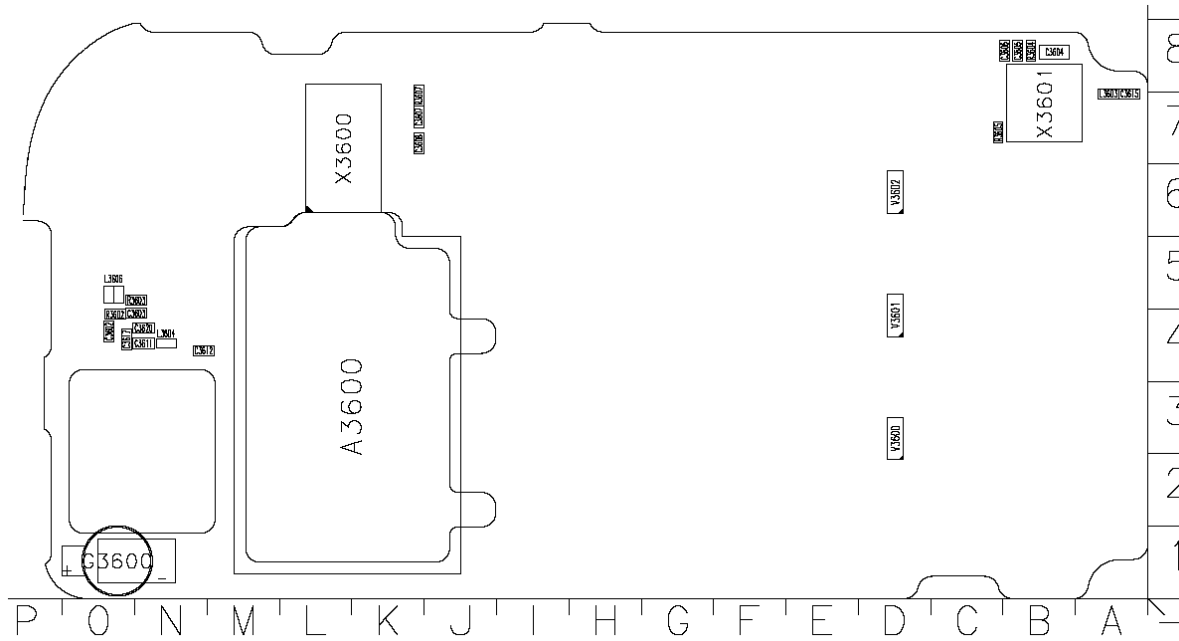




## RM-48 assembly values diagram, top

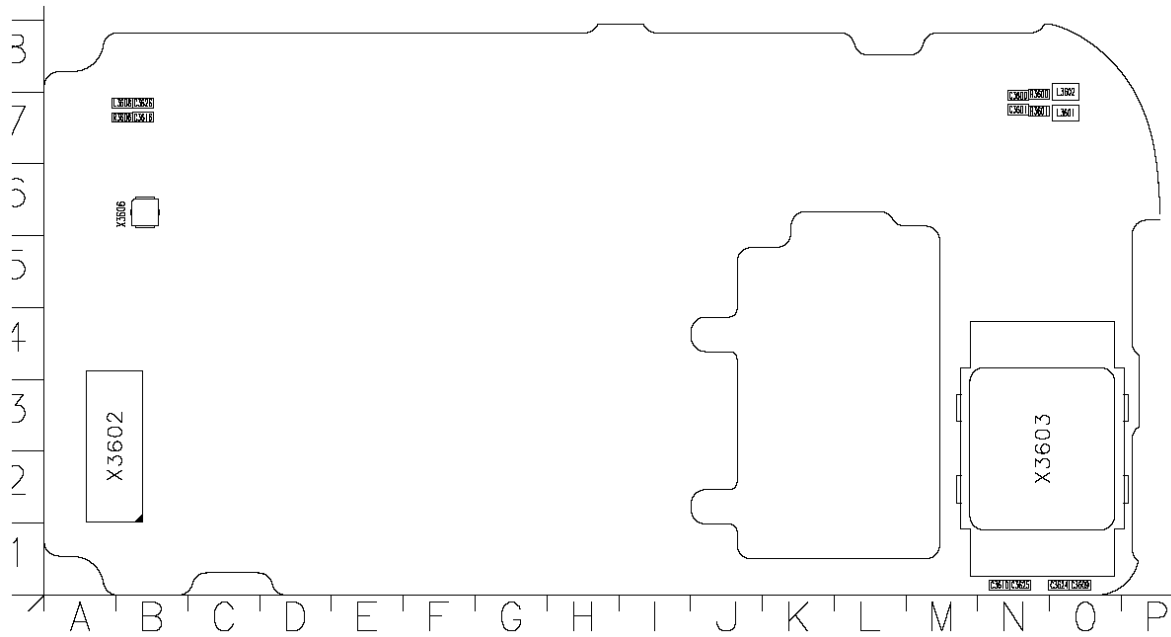


## RM-8/RM-47 upper block assembly values diagram, bottom



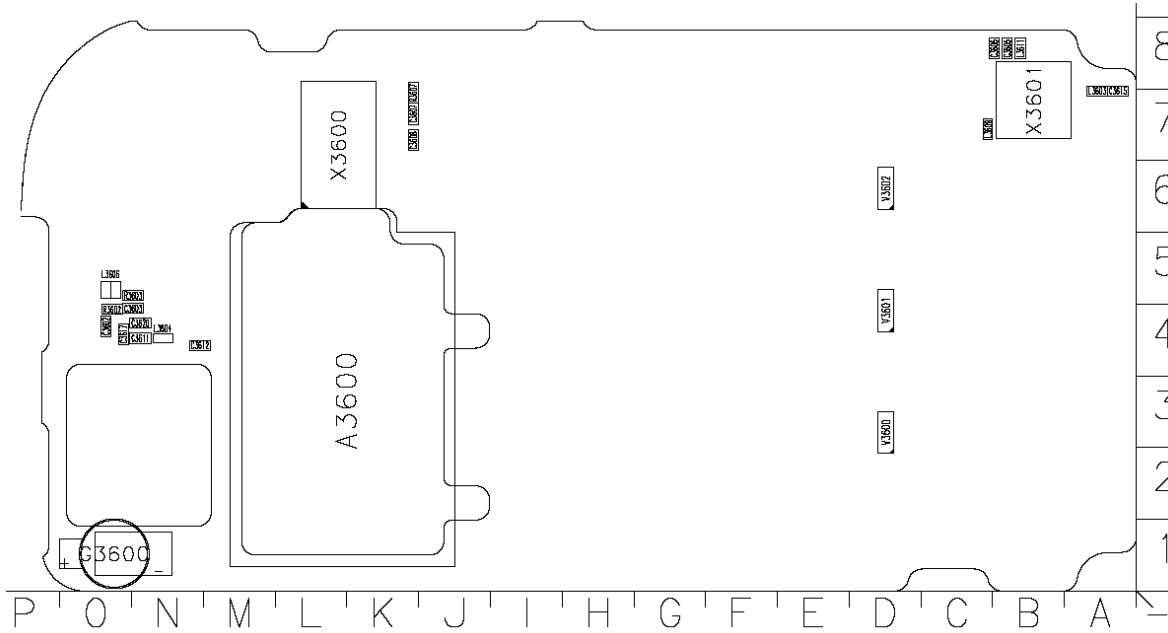
*Note: R3605 will change to L3609, when PWB Upper Assy HWID1604 will change to HWID1606*

## RM-8/RM-47 upper block assembly values diagram, top



*Note: R3605 will change to L3609, when PWB Upper Assy HWID1604 will change to HWID1606*

**RM-48 upper block assembly values diagram, bottom**



## RM-48 upper block assembly value diagram, top

